

Mid-America Subcommittee on Highway Transport

October 18, 2011



Comparison



Reality of Demand



- Trucks are the major transportation means for shipping cargo.
- The volume is projected to continue to grow as well as the size of goods transported.
- Increased loads and number of trucks, especially in urban areas increases traffic and safety concerns.
- Roads and bridges are not keeping pace in capacity/aging infrastructure.
- Money and Reality

Uniformity

- Permits
 - Length of permits (min 5 days) MAASTO 😊
 - Re-send capabilities
 - Routing
- Weight, Height, Width and Length
 - Envelope vehicle for routine issuance
- Pilot/Escort Car Requirements
 - Endorse Program Under State Guidance/control
 - Certification
 - Reciprocity
 - Uniformity of Need Requirement

Uniformity (continued)

- Bridge Analysis
 - AASHTO sets standards in bridge ratings
 - Need exists to develop standard tools
- Signage
 - Standardize
- TANDEM Weight Allowances
- HOS
- Compliance, Safety, Accountability (CSA)

HEAVY HAUL PERMIT RESTRICTIONS

Tandem Axle Allowances

Notes for Specific Individual States

Alaska. Allows 50,000 lbs. per tandem axle.

Delaware. Allowable axle weights are subject to bridge limitations.

Illinois. Allows 48,000 lbs. on drive axle tandems. Five axle combinations can carry 48,000 lbs. per tandem for GVWs up to 100,000 lbs.

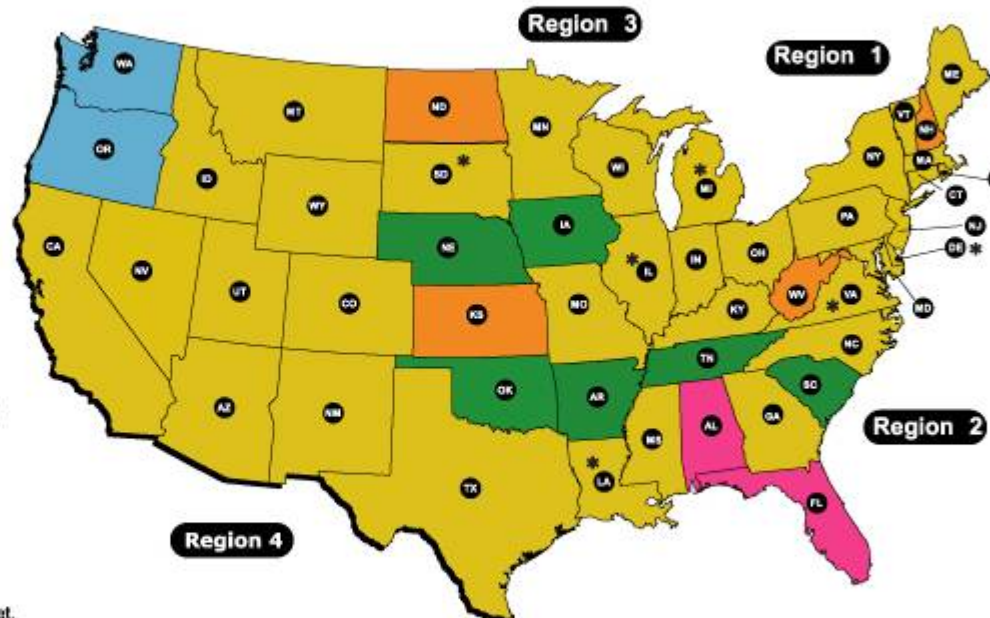
Louisiana. Allows 46,000 lbs. per tandem for GVWs up to 108,000 lbs. Weights exceeding 108,000 lbs. reduce tandem allowances to 40,000 lbs. per tandem.

Michigan. Allows 90,000 lbs. per tandem axle, although weights vary depending on bridge classification, tire size, and increase in vehicle gauge.

South Dakota. Five axle combinations are allowed only 37,000 lbs. per tandem.

Virginia. Allows 50,000 lbs. per tandem on interstate highways only. Off interstates, tandem allowances are limited to 44,000 lbs.

Assumptions: Weights shown assume 4 feet, 4 inches between axles in the tandem group. Some states vary weight according to axle spacings.



LEGEND - Maximum Permit Allowances

46,000+	43,000
45,000	40,000
44,000	

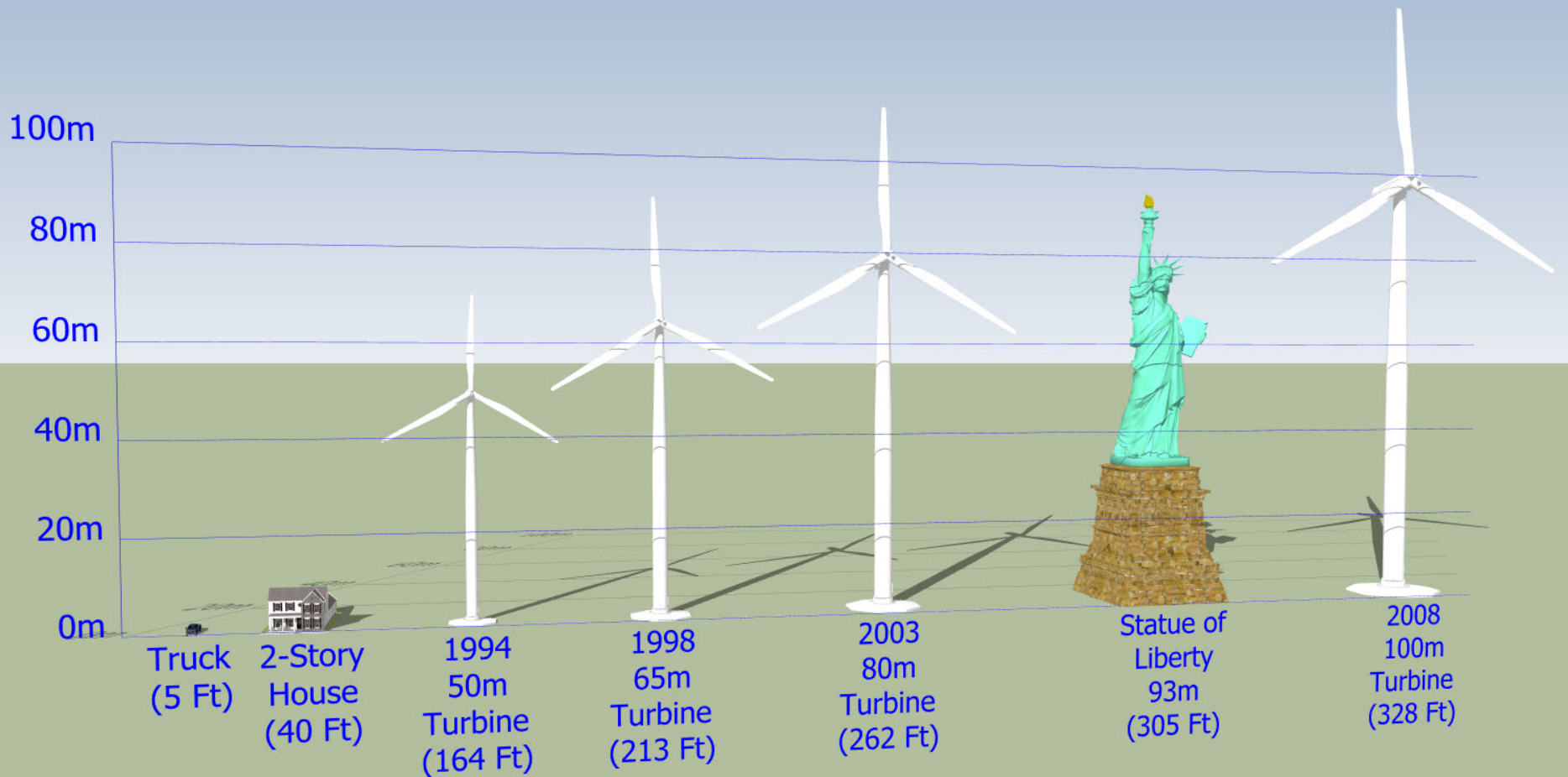
SCRA Specialized Carriers & Rigging Association
2750 Prosperity Avenue, Suite 620
Fairfax, Virginia 22031
(703) 698-0291 www.scranet.org

REV 06/08

Mobile Cranes

Mobile Cranes, concrete pumpers, freight and material handlers, demolition, excavation and trenching equipment, along with many other rapid erecting, labor saving technology is progressive, but add additional burden to our transportation system.

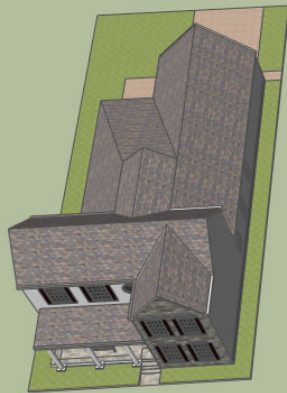
Wind Turbine Comparison



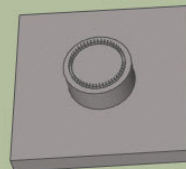
Foundation Comparison



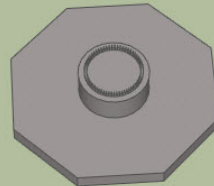
Truck



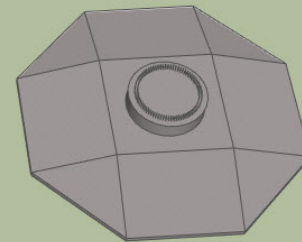
2-Story House



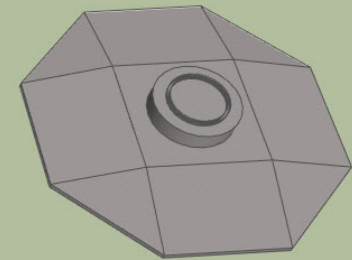
1994
50m Turbine
36' Square
127 CY Concrete



1998
65m Turbine
43' Octagonal
182 CY Concrete



2003
80m Turbine
56' Octagonal
375 CY Concrete



2008
100m Turbine
60' Octagonal
510 CY Concrete

Wind Farm Development Timeline

Task	Year 1	Year 2	Year 3	Year 4
Site Selection / Feasibility	Active	Completed	Completed	Completed
Permitting Studies / Applications	Completed	Active	Completed	Completed
Permitting Process	Completed	Active	Active	Completed
Power Marketing	Completed	Active	Active	Completed
Interconnection Studies	Active	Active	Active	Completed
Interconnection Upgrades	Active	Active	Active	Completed
Construction	Completed	Completed	Active	Active

Summary

- Increase in volume
- Aging infrastructure / inadequate funding
- Need for uniformity for efficiency
- Answers may be difficult, but cooperation and communication is essential between industry and government officials.