

# Incorporating Waterways into Planning



Lynn J. Soporowski, P.E.

Division of Planning

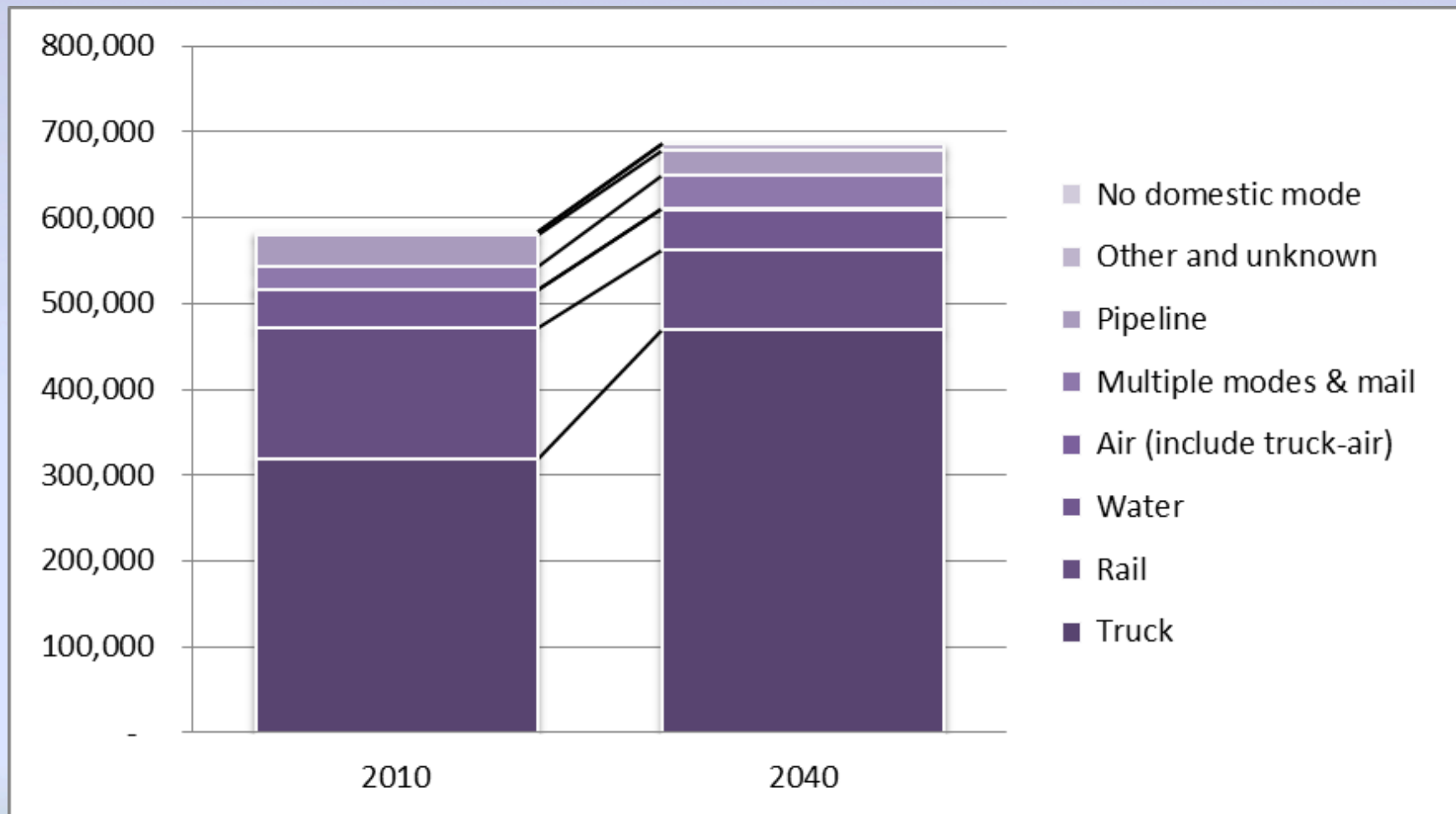
Kentucky Transportation Cabinet

# What KYTC has done...

- Context / History
- Riverport Study -2008
- Kentucky Legislature Actions
  - Water Transportation Advisory Board
  - Kentucky Riverport Improvement Projects
- KY Economic Development and USACE
- Next Steps



## Forecast of Transportation for Kentucky 2010-2040 By Weight (in thousand tons)



Source: Freight Analysis Framework, FHWA

# Water Transportation in KY

## Water Transportation in KY

- Ferry Operations
  - 10 Operation-1 Private, 2 Federal, 7 State funded
- Public Riverports
  - 12 Public-7 operational, 5 developing
- Federal Partners
  - US Corps of Engineers-4 Districts
  - US Coast Guard
  - US DOT –FHWA and MARAD



# PUBLIC RIVERPORTS IN KENTUCKY



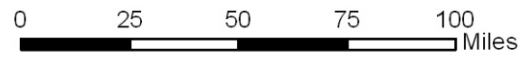
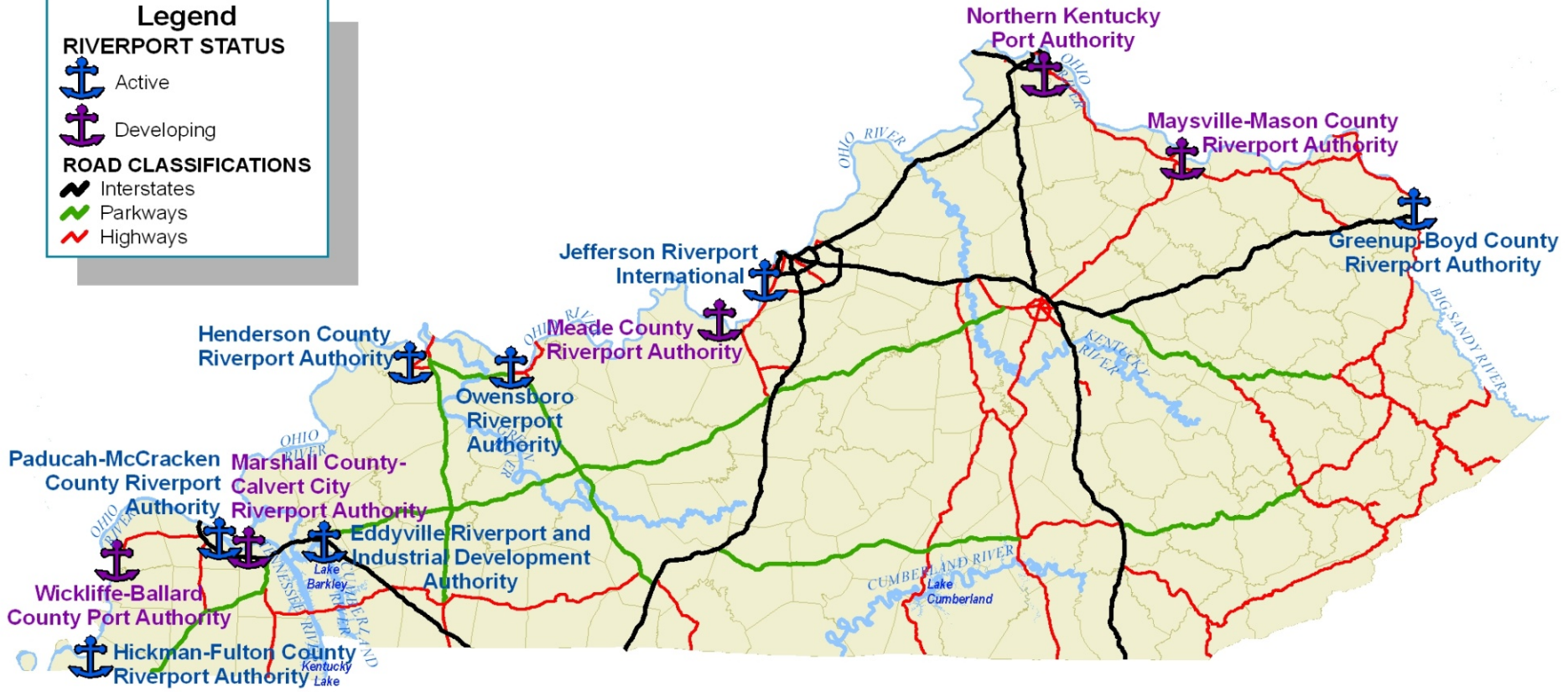
**Legend**

**RIVERPORT STATUS**

- Active
- Developing

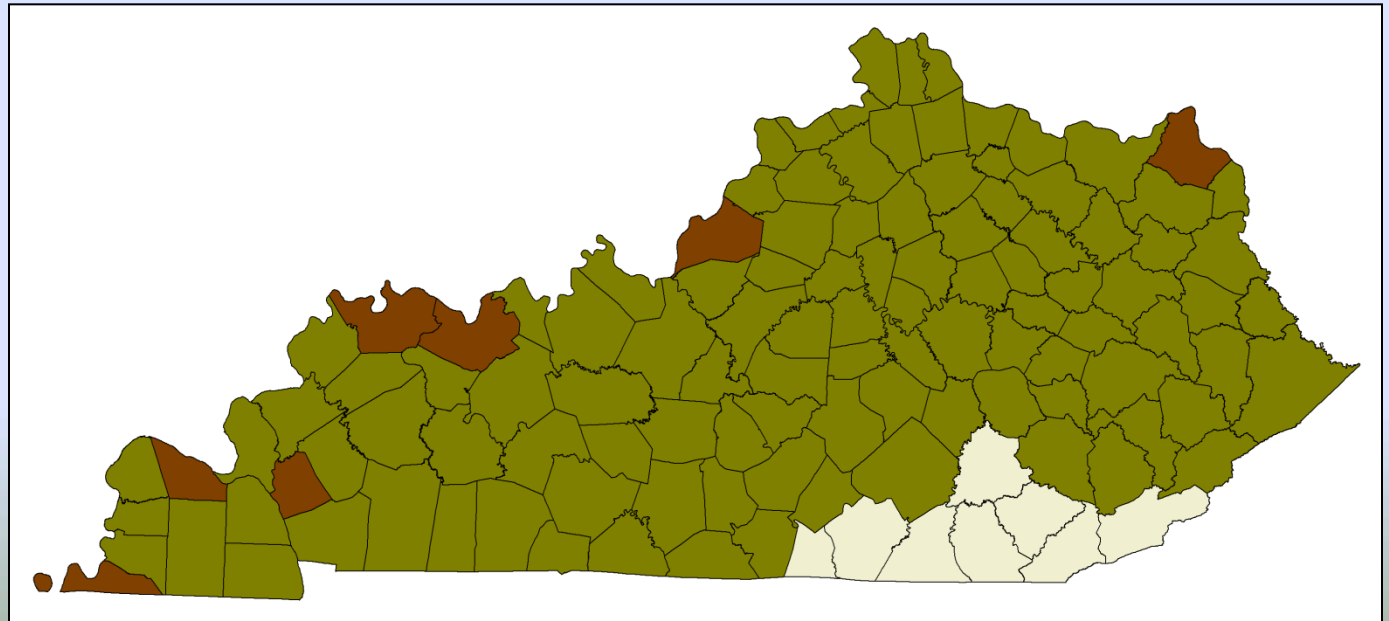
**ROAD CLASSIFICATIONS**

- Interstates
- Parkways
- Highways



# Impact of Public Ports

- Impact goes beyond the 7 counties with operating Riverports.
- Counties within 100 miles of our Riverports benefit.





# Riverport and KY Road Fund

## Kentucky Constitution Section 230

- *Money not to be drawn from Treasury unless appropriated - Annual publication of accounts -*  
***Certain revenues usable only for highway purposes.***
- ***..... No money derived from*** *excise or license taxation relating to*  
***gasoline and other motor fuels, and no moneys***  
***derived from fees,*** *excise or license taxation relating to registration,*  
*operation, or use* ***of vehicles on public highways shall be***  
***expended for other than the cost of*** *administration, statutory*  
*refunds, and adjustments,* ***payment of highway obligations,*** *costs*  
*for construction, reconstruction, rights-of-way, maintenance and repair of public highways*  
*and bridges, and expense of enforcing state traffic and motor vehicle laws.*

**Text as Ratified on: November 6, 1945.** History: 1945 amendment was proposed by 1944 Ky. Acts ch. 9, sec.1: **original version ratified August 3, 1891,** and revised September 28, 1891.



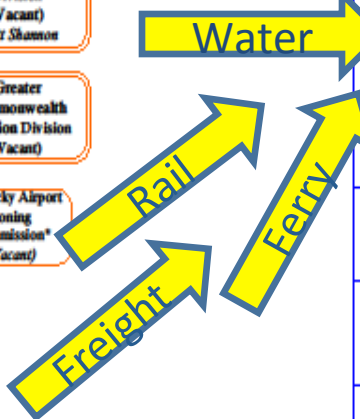
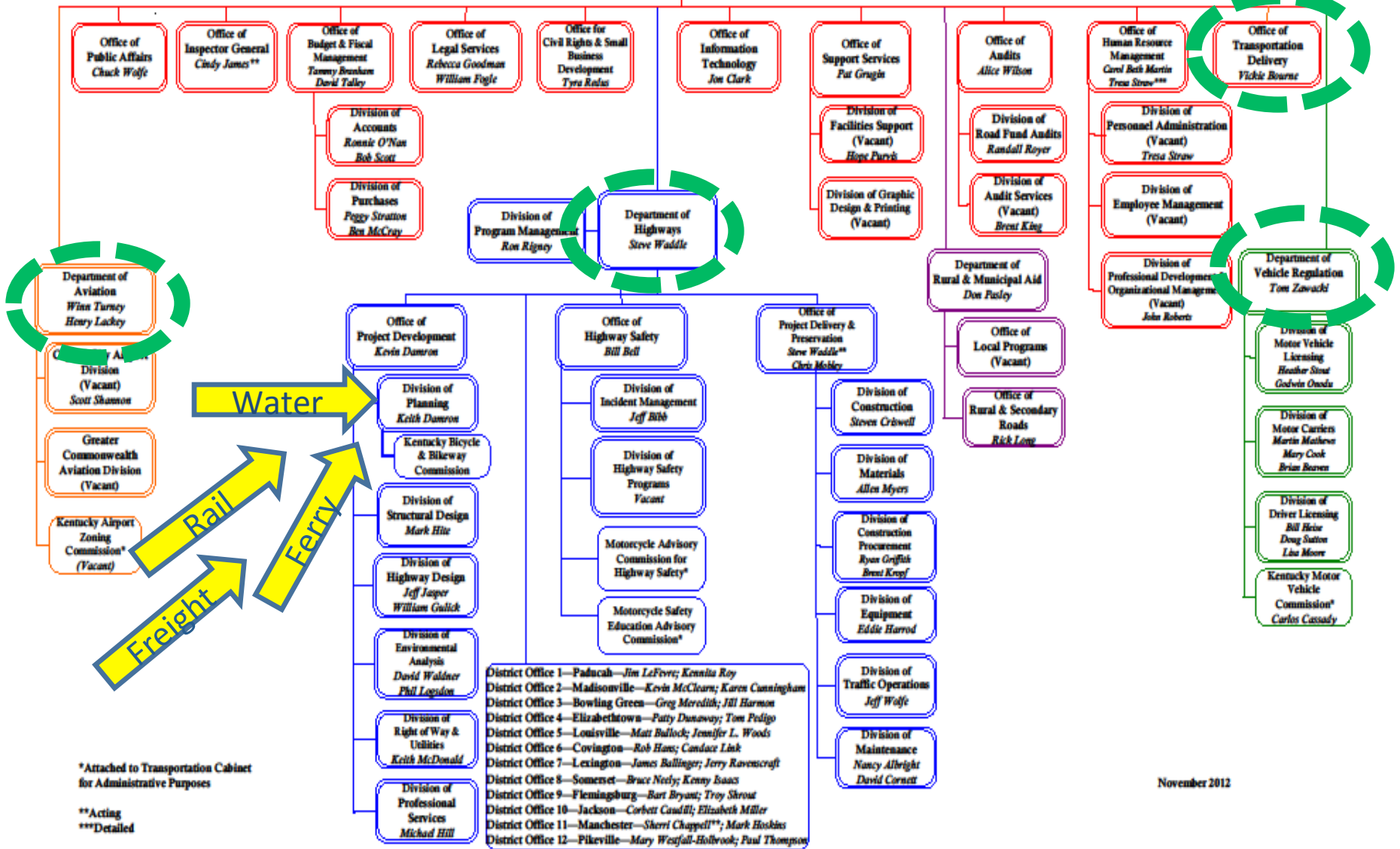
# Governance

	IL	IN	KY	MN	MS	MO	OH	OR	TN	VA	WV
State Owned		X			X					X	X
Water Transp Advisory Board			*								
\$\$\$ (Grants) - Operations						X		X			
\$\$\$ (Grants) - Infrastructure			*	X	X	X		X			
\$\$\$ (Loans) - Capital Needs	X			X			X	X			X
Technical Assistance			X	X		X			X		X
Marketing Assistance			+		X	X		X			
Other					X		X	X			



ORGANIZATIONAL CHART

OFFICE OF THE SECRETARY  
Michael Hancock, Secretary  
Geri Grigsby, Chief of Staff

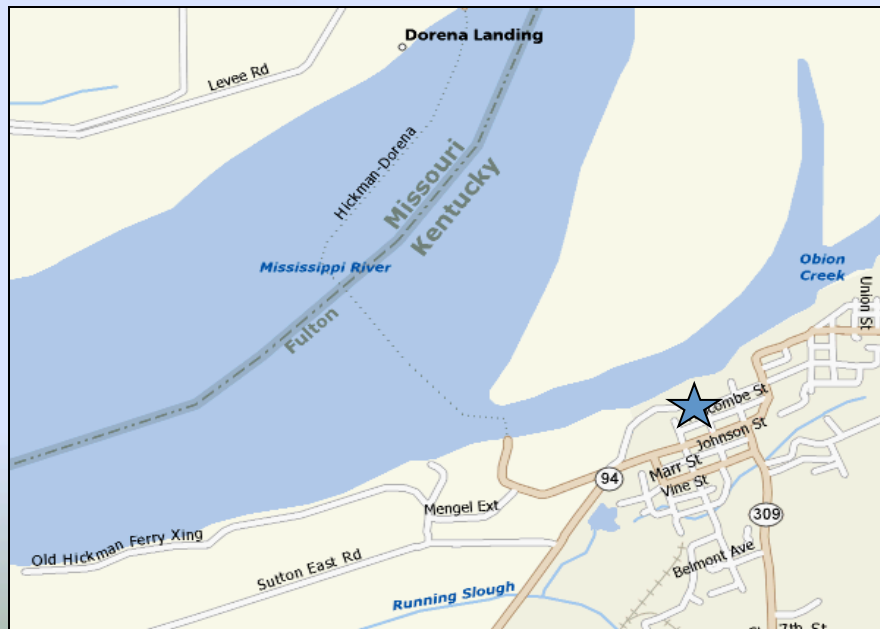


\*Attached to Transportation Cabinet for Administrative Purposes

\*\*Acting  
\*\*\*Detailed

# Hickman-Fulton County Riverport Authority

- **Distance to Rail: On-site**
- **Distance to US Hwy: 18 miles**
- **Services: Commodity handling - barge, truck, rail, ground storage, warehouse storage.**
- **Primary Business: fertilizer, coke, grain, steel wire rod, steel shapes, general cargo.**
- **Contact: Greg Curlin-Port Director**



# Paducah-McCracken County Riverport Authority

- **Distance to Rail: On-site**
- **Distance to US Hwy: 1 mile**
- **Services: Commodity handling – barge, truck, rail, ground storage, warehouse storage, liquid storage.**
- **Primary Business: Fertilizer, sand, limestone, rubber, steel shapes, rebar, coke, general cargo, grain.**
- **Contact: Ken Canter – Port Director**



# Henderson County Riverport Authority

- **Distance to Rail: On-site**
- **Distance to US Hwy: 1 mile**
- **Services: Commodity handling – barge, truck, rail, ground storage, warehouse storage.**
- **Primary Business: scrap metal, fertilizer, wire rod coils, zinc, grain, lumber, aluminum fluoride.**
- **Contact: Greg Pritchett – Port Director**



# Riverport Study Summary

- Work closely with Corp of Engineers and Coast Guard on condition of Locks and Dams.
- Ensure connection of Riverports to National Truck Network
- Riverports need from KYTC:
  - Dedicated funding
  - Governance equal to other modes
  - Staff member dedicated to water transportation.

# KY Legislature

- **174.205 Duties of Water Transportation Advisory Board. -- Effective: July 15, 2010**

(1) Advise the Transportation Cabinet, the Cabinet for Economic Development, the Governor's Office, and the General Assembly on matters relating to water transportation;

# KY Legislature

- **174.210 Riverport financial assistance trust fund-- Effective: July 15, 2010**

**Empty bucket....but a bucket!!**





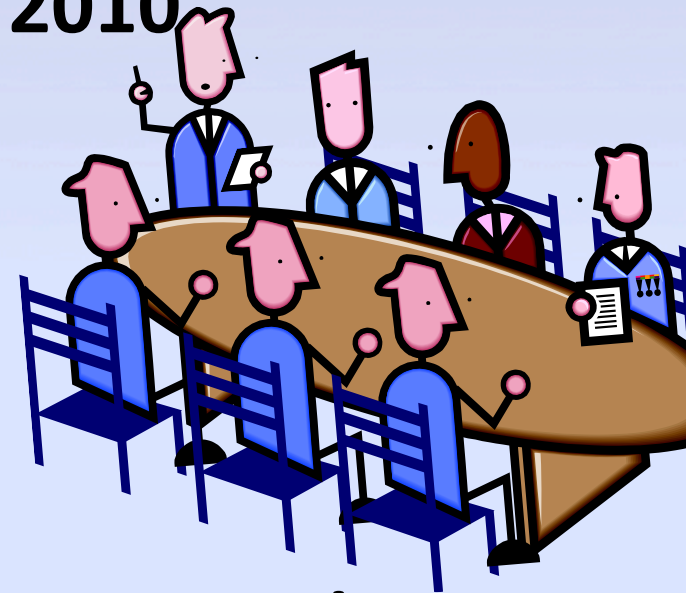
# KY Legislature

- **154.80-140 Riverport marketing assistance trust fund-- Effective: July 15, 2010**



**Empty bucket....but a bucket!!**

**Partnership with the Cabinet for Economic Development.**



# KY Legislature

- 2012 Special Session --The Transportation Cabinet Budget Bill

Part 1 A -1. (5) Riverport Improvement: Included in the above General Fund appropriation is ***\$500,000 in each fiscal year*** to improve public riverports within Kentucky.

Improvements ***shall be limited to dredging and maintenance of access.***

- 2015 and 2016 Budget too!!



# Olmsted Locks & Dam



*Olmsted Locks & Dam*

# Greenup Locks & Dam

- **Present Condition**
  - Deteriorated Miter gate on main lock chamber
    - Unscheduled outage in FY 03 revealed cracks on miter gate
  - Three year dewater cycle to assess condition (versus 12-15 year cycle)
- **Economic Impacts**
  - Eighth busiest lock of Corps' 230 locks
  - FY 03 main lock chamber closure – eight weeks
    - 546 tows affected
    - 17,412 hours of delay for towing industry
  - Closure costs
    - Towing Industry – \$13.2M
    - End user – \$28.7M
- **Impacts on District's O&M Program**
  - FY 03 – \$1.5M for additional dewatering and repair
  - FY 06 – \$1.3M for dewatering, inspection, and repair



**Miter Gate Cracking**



**Dewatering & Gate Damage**

## STUDY GOALS AND OBJECTIVES

Assess infrastructure along and utilization of navigable waters within the Commonwealth;

Analyze potential future utilization of the navigable waters within the Commonwealth;

Assist CED in developing river site certification criteria in accord with established Kentucky CED evaluation criteria;

Establish a process and tools to prioritize sites for evaluation based on site criteria and previous analysis; and

Inventory, evaluate and identify priority sites for potential site certification.

KY Cabinet for Economic Development • US Army Corps of Engineers

# Commonwealth of Kentucky River Site Screening Assessment

Planning Assistance to States Program

# METHODS AND RESULTS



# Conclusion

- **Collecting data is documenting**
  - Lockage data, FAF, models, STB waybill
- **Hearing is learning**
  - Webinars, conferences, meetings: USACE, USCG,
- **Seeing is believing**
  - Site visits, contract administration, legislature
- The future.....still being written....

# McAlpine Locks & Dam

*McAlpine Locks construction*



*Rendering of completed project*



# Contact information

Nathan A. Moulder

Community Planner

USACE-Louisville District

P: 502.315.6776 C: 502.689.8404

[[Nathan.A.Moulder@usace.army.mil](mailto:Nathan.A.Moulder@usace.army.mil)]