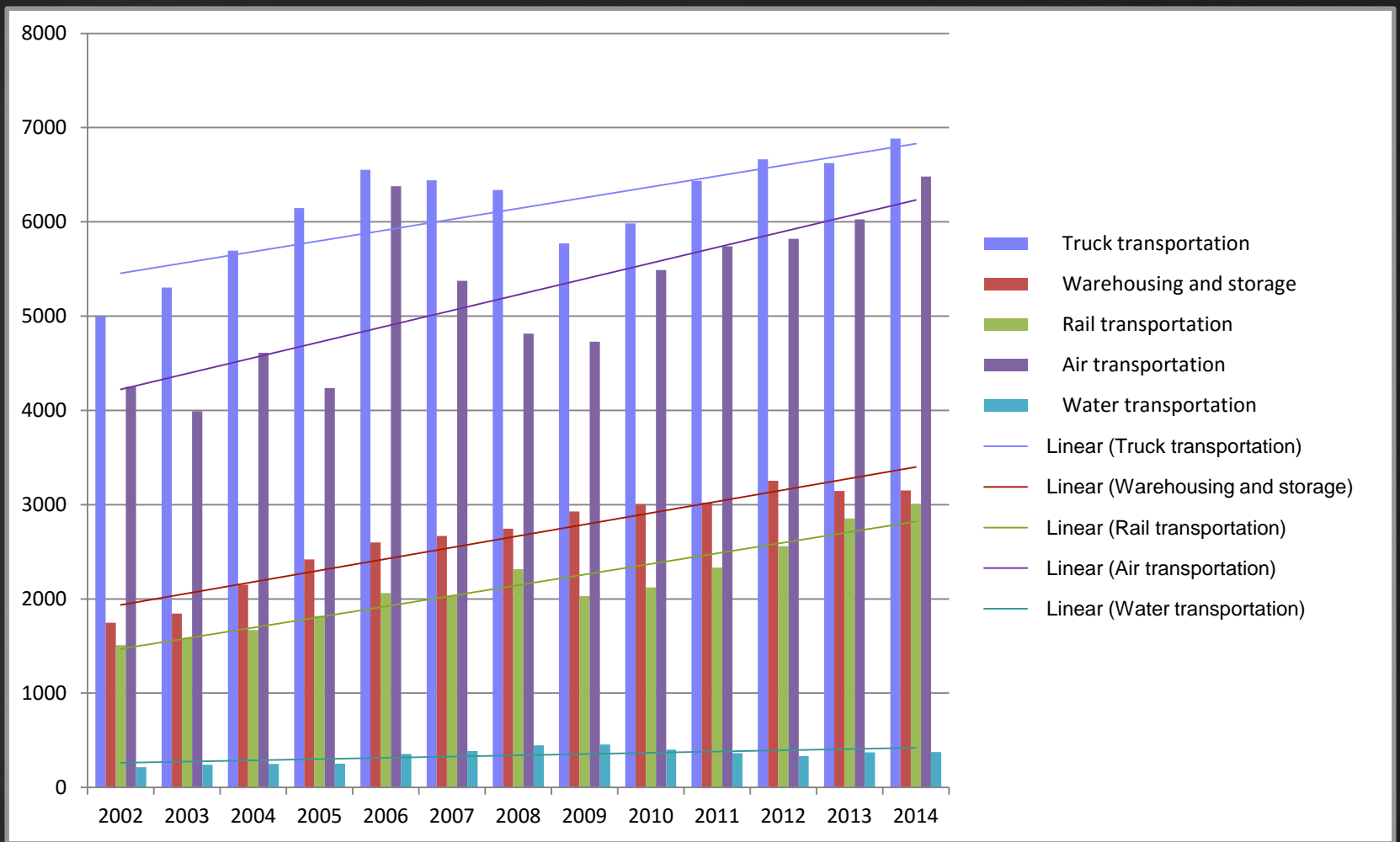
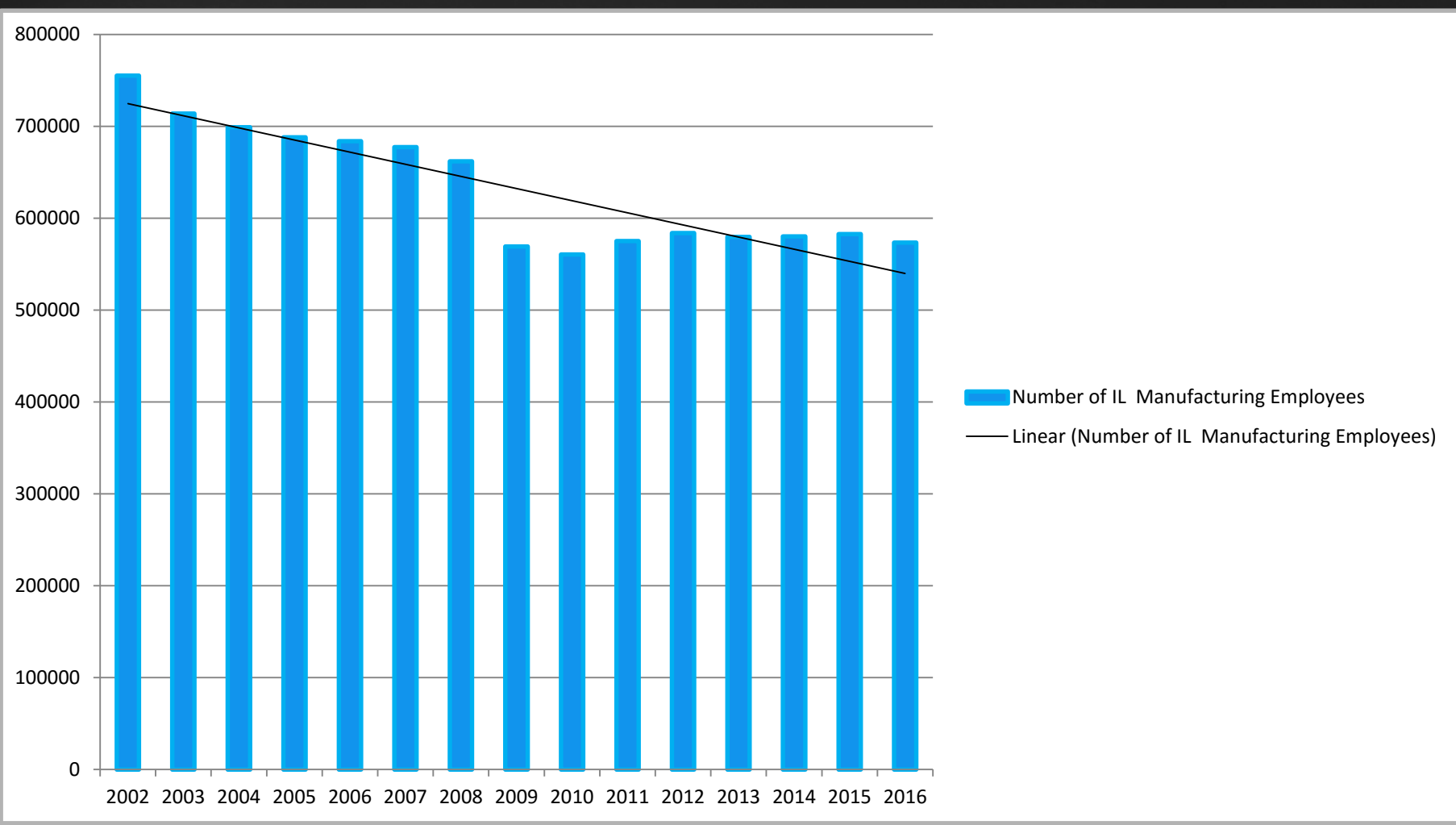


- Almost every transportation system in Illinois is ranked in the top five in the nation in terms of size and usage. This includes roadways, rail, rail freight, air, and intermodal transportation.
The only area lagging behind is maritime.
- Freight transportation makes up 20% of Illinois GDP and is the largest employment sector in the state.

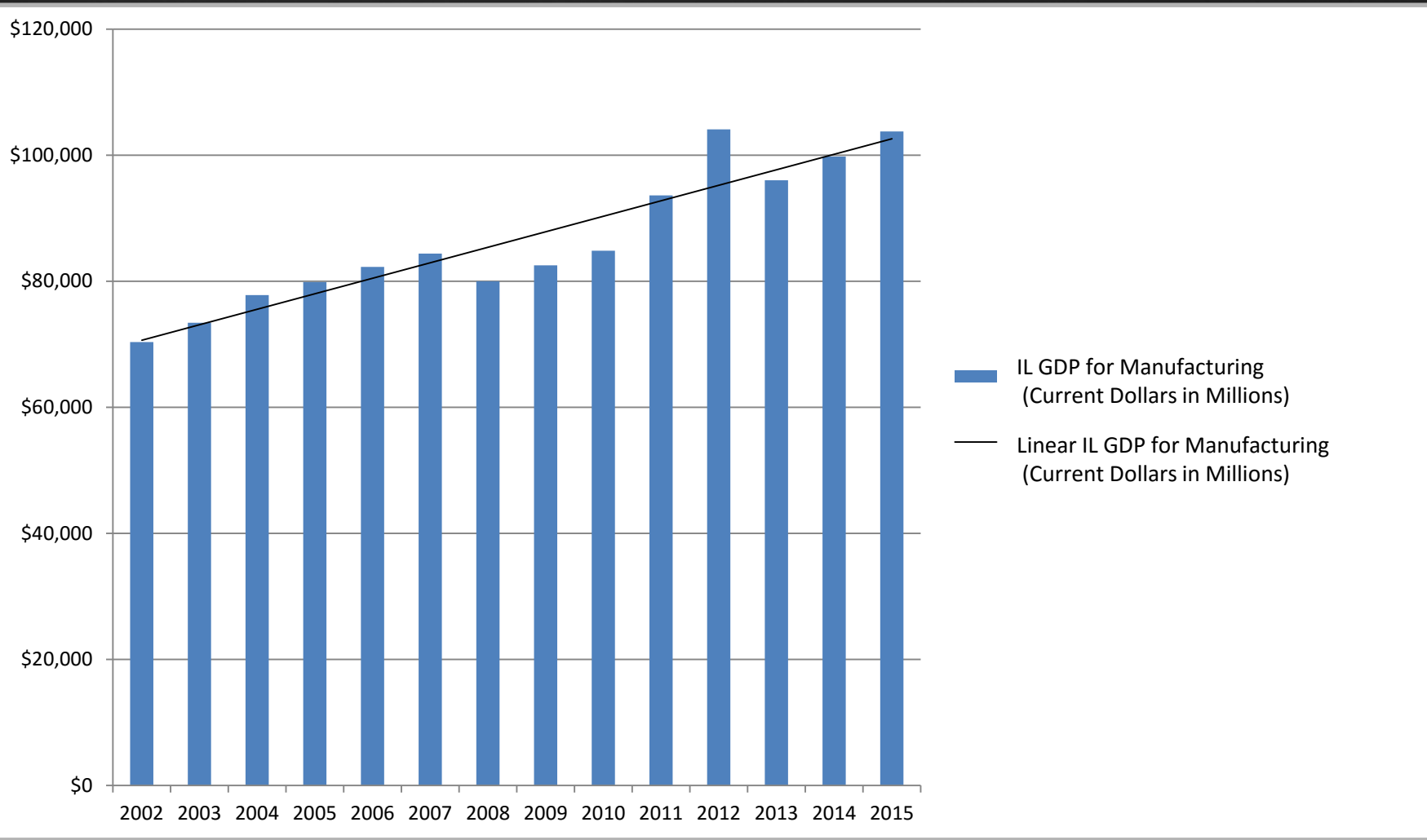
Illinois Freight



IL GDP for State Transportation and Warehousing (Current Dollars in Millions)

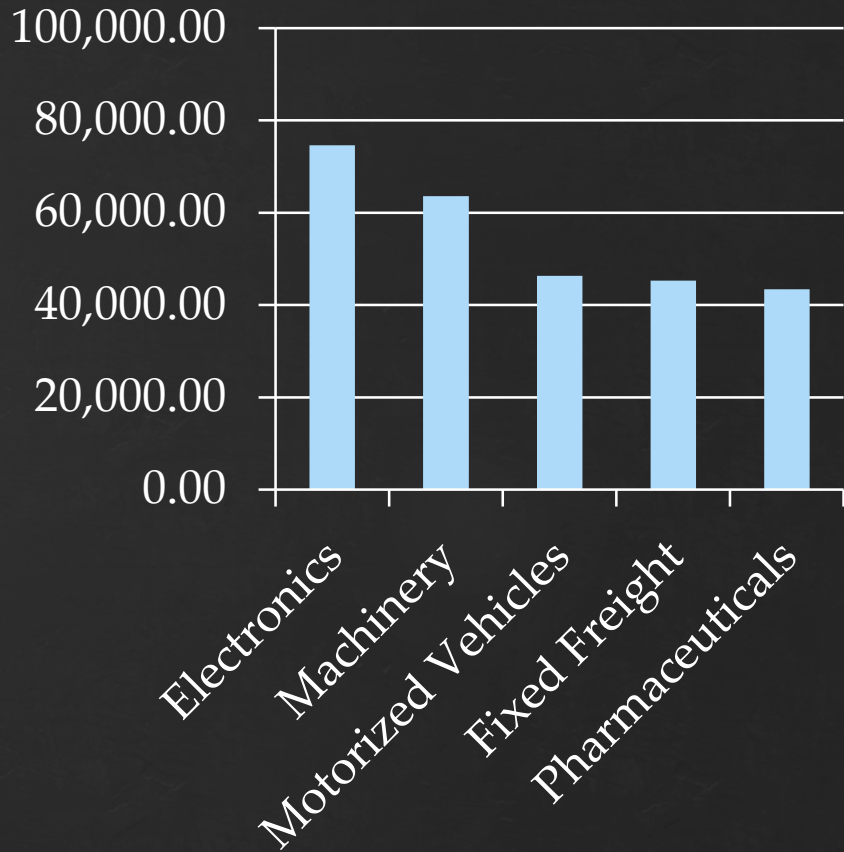


Number of IL Manufacturing Employees

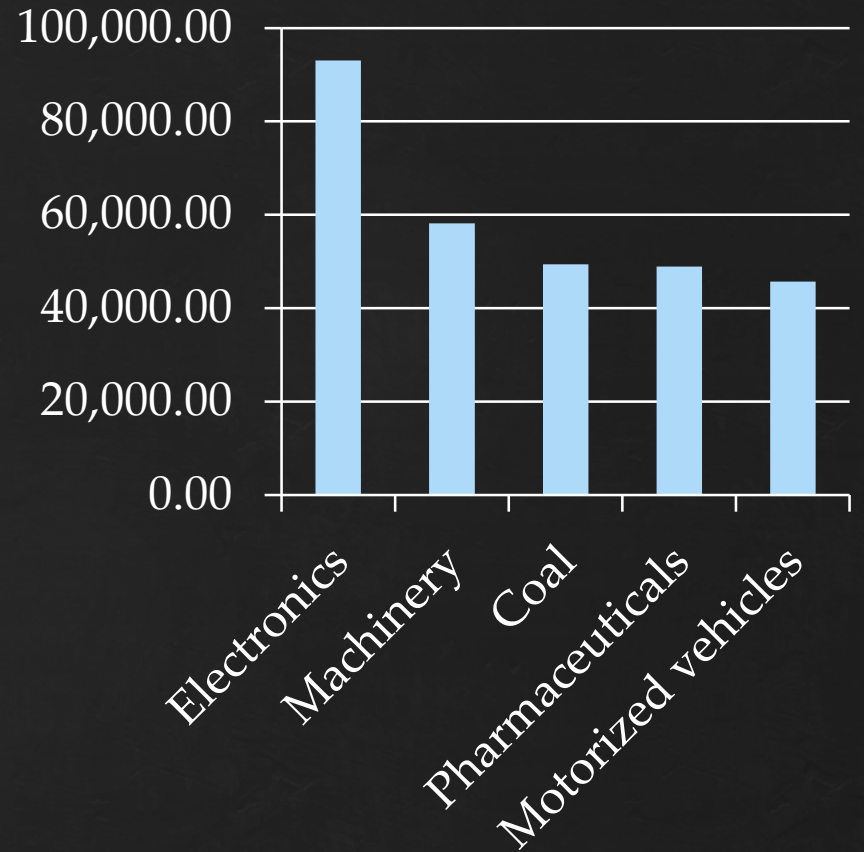


IL GDP for Manufacturing (Current Dollars in Millions)

Outbound 2012 (\$1M)

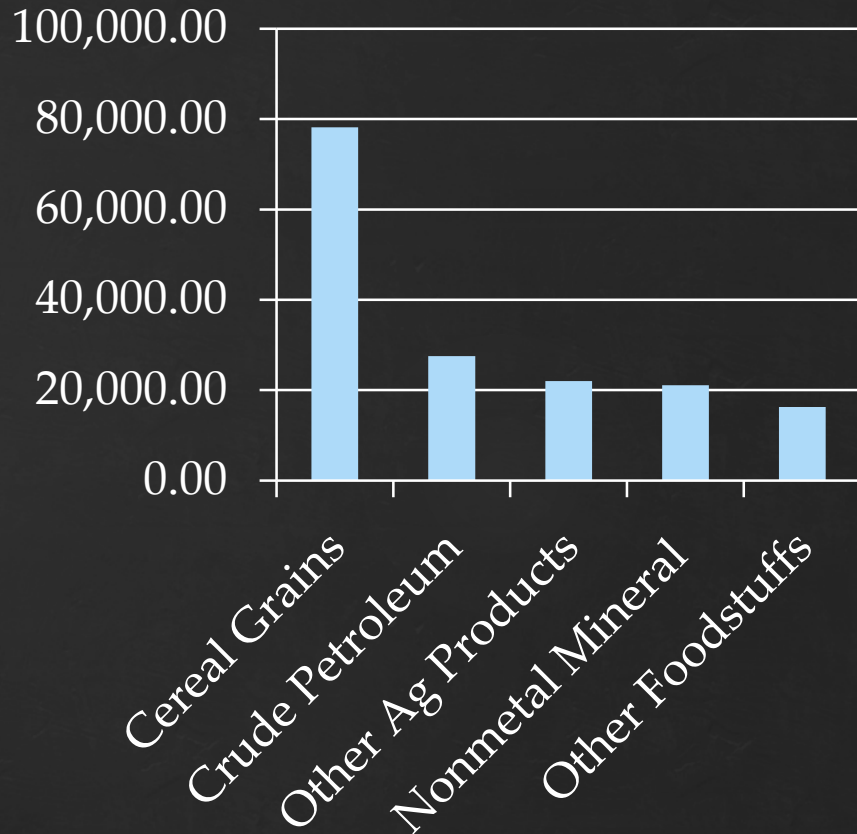


Outbound 2015 (\$1M)

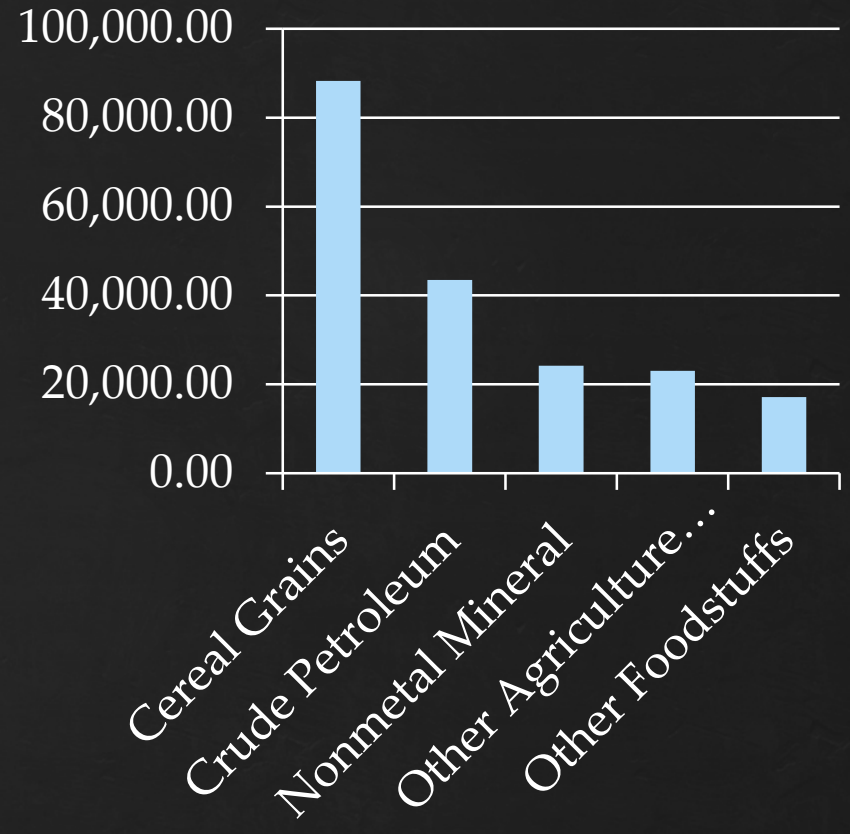


Freight Outbound

Outbound 2012 (1K tons)



Outbound 2015 (1K tons)



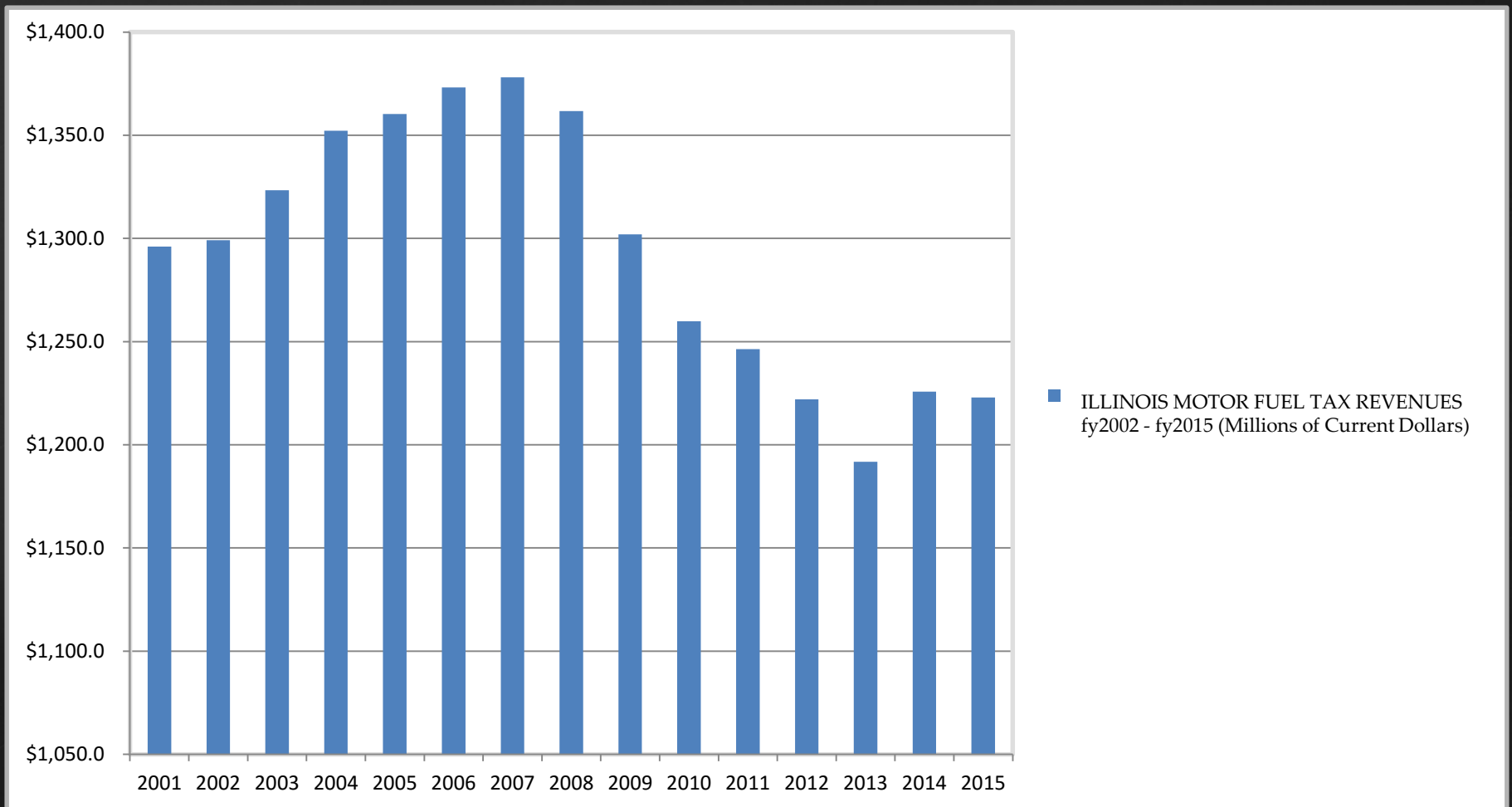
Outbound Tonnage

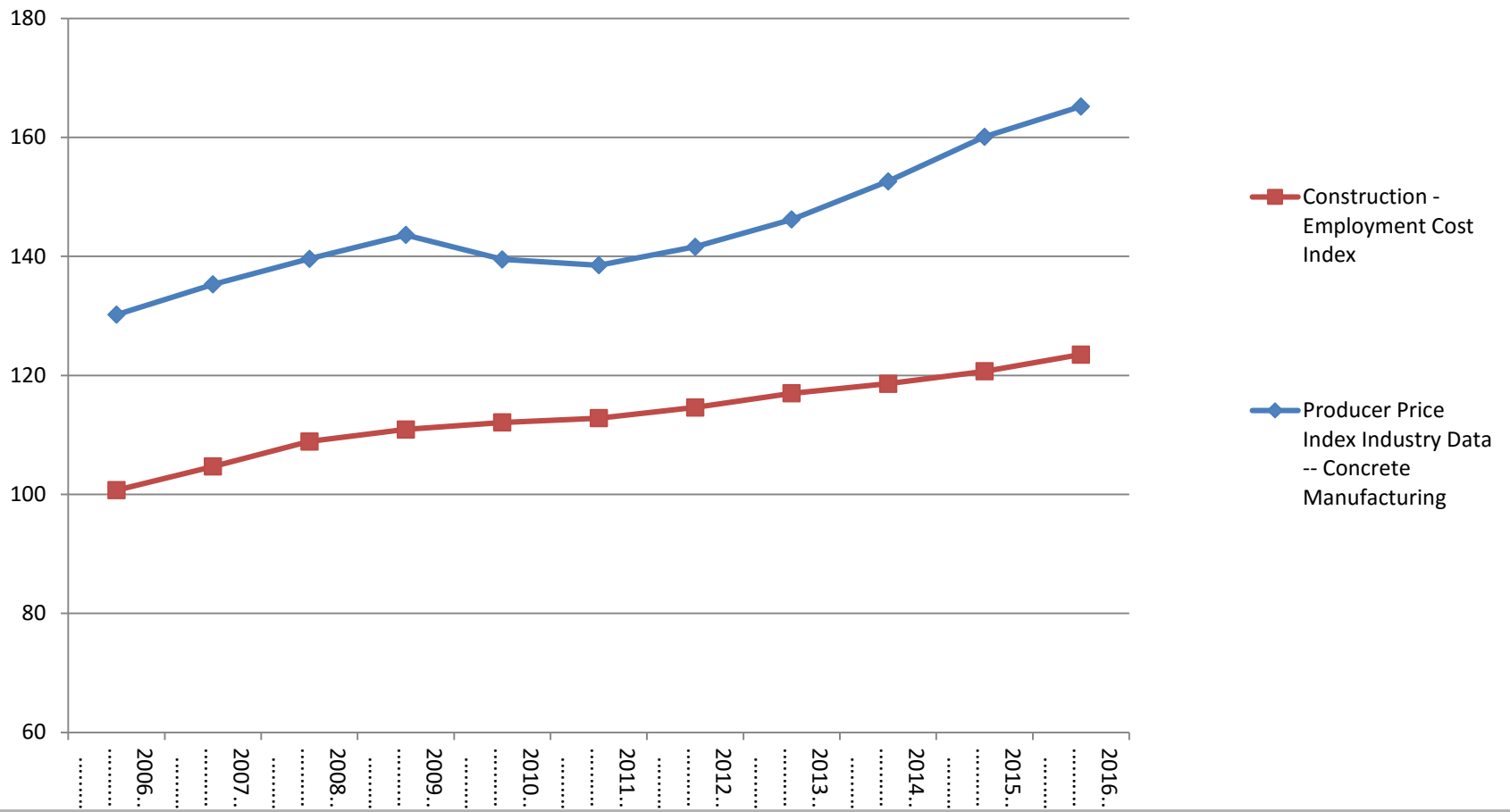
- Manufacturing as a percentage of GDP is trending upward.
- Total dollar amount of exported goods is trending upward.
- Total tonnage is trending upward.
- Why act like we're weaker than we are?
- The story isn't we're bad. It's that we can do even better.

Things are trending upward...

ILLINOIS MOTOR FUEL TAX REVENUES FY2002 -FY2015

(Current Dollars in Millions)





Construction Materials and Employment Cost Changes in IL

Class 1 Railroads

	2012 Carloads (Million)	2012 Revenue (\$B)
BSNF	9.7	20.2
UP	9.0	19.7
NS	7.1	11.0
CSX	6.4	11.8
CN	5.0	8.9
CP	2.7	5.6



Press **F11** to exit full screen

CREATE

KEEPING THE GO IN CHICAGO

Chicago Region Environmental and Transportation Efficiency Program

- [Home](#)
- [About CREATE](#)
- [CREATE Projects](#)
- [Doing Business](#)
- [Press Room](#)

Quick Links

Metra to host DBE certification workshop July 20

CREATE in the News

Amtrak Chicago Gateway Initiative Blue Ribbon Panel Suggests Solutions, including CREATE Projects

Fixing Chicago - Trains Magazine Here's one bit of infrastructure we can't afford to neglect anymore

Resources

CREATE Program 75th Street Corridor Improvement Project Final Environmental Impact Statement and Record of Decision

Project Fact Sheets, Photos, and Videos

CREATE Supports International Trade

Final Feasibility Study

CREATE Project Status Summary

WELCOME



CREATE is a first-of-its-kind partnership between U.S. DOT, the State of Illinois, City of Chicago, Metra, Amtrak, and the nation's freight railroads. A project of national significance, CREATE will invest billions in critically needed improvements to increase the efficiency of the region's passenger and freight rail infrastructure and enhance the quality of life for Chicago-area residents.

70 CREATE Projects → 30-Year Benefits of \$31.5 Billion

Rail Benefits

Economic Growth

Chicago can accommodate growth in passenger and freight trains

Fewer Delays

Reduced delay to passenger and freight trains

Cost Savings

Reduced shipping costs may be passed on to consumers

Roadway Benefits

Fewer Delays

Reduced delay to vehicles from eliminating 25 grade crossings

Increased Safety

Elimination of rail-roadway conflicts at 25 grade crossing sites

Sustainability

Reduced fuel consumption and emissions

Reduced Congestion

Fewer trucks on the roadways

PROJECTS MAP



[Click to View Project Map](#)

THREE KEYS TO ACHIEVING MANY BENEFITS

70 Projects to CREATE Chicago's Transportation Future
Achieving \$31.5 billion in economic benefits

- Eliminating 25 grade crossings
- Eliminating 25 rail-roadway conflicts
- Reducing delay to vehicles from eliminating 25 grade crossings
- Reducing fuel consumption and emissions
- Reducing congestion
- Reducing shipping costs
- Increasing safety
- Increasing economic growth
- Increasing sustainability

[Click to View CREATE Economic Benefits Brochure](#)

CREATE: Keeping Chicagoland at the nexus of America's freight net...





Project Type

- Rail Improvement
- ▬ Highway-Rail Grade Separation
- ▲ Passenger-Specific Project
- ⬭ Environmentally Linked Projects

CREATE Designated Corridors

- P Passenger Corridors
- EW East-West Corridor
- B Beltway Corridor
- WA Western Ave. Corridor

Note: The first letter of a project indicates its Corridor. "T" projects are rail operations Towers. "GS" projects are Grade Separations.

0 1 2 3 4 Miles

LAKE MICHIGAN

N
W E
S

- CenterPoint: The largest in-land port in the U.S.
- 2,500 acre integrated logistics center
- 1,000-Acre rail facility
- 1,400-Acre industrial park
- Rail and Truck transportation centralized. Air travel located nearby with access to both O'Hare and Midway airports

Multi-Modalism at work

- The private sector isn't a full partner.
- Even massive future gains may not be enough to convince them to make investments now.
- Bringing multiple private actors together is difficult on its best day.
- The process is time consuming and requires substantial negotiations to bring everyone to the table.

Issues with P3's

- Announced July 11'th this P3 is an example of perhaps the best way to engage in these types of partnerships.
- This bridge project is estimated to cost between \$170 to \$190 million dollars with an IDOT contribution of only \$21 Million.
- A tolled bridge for trucks but still available passenger car use.

Houbolt Bridge

- Equal partnerships are difficult to come by because the public sector and private sector have vastly different needs and goals.
- The state's best offering isn't funding, it's access, ease of permitting, and bringing people together.
- The private sector is more than willing to improve its individual business, but competing actors don't make the best roommates.

Lessons for the future

- Illinois Long Range Plan update is due in 2017
- Freight policy and planning has become a cornerstone of our efforts.
- Maritime enhancements, evolving technologies, and innovative policies are driving our internal discussions.
- We are interested in the thoughts and ideas of our neighboring states because our networks are linked.

Freight in Long Range Planning