



# The Importance of the Mississippi River





The New Orleans Board of Trade, Ltd.





## NOBOT Marine Exchange

- Provide Vessel Arrival Time at Southwest Pass and Pilottown
- Provide Vessel Agents with Representation with Government Agencies, Port Authorities, and other Maritime Related Organizations
- Provide Immediate Notification of River Closures, Changes in Loading Draft, or any other Restrictions to Navigation
- Provide Vessel Agents with Access to the AIS Service



## Membership Composition

- Ship Chandlers
- Vessel Agents
- Maritime Consultants
- Launch Services
- Trade Associations
- Marine Repair
- Logistics
- Vessel Owners/Operators
- Attorneys
- Port Authorities
- Bunker Distributors
- Surveyors
- Manufacturers
- Stevedores
- Terminal Operators
- Railroad
- Utilities
- Bankers
- Coffee Brokers/Importers
- Freight Forwarders
- Custom House Broker
- Laboratories
- Warehousing
- Towing Companies
- Marine Pilots
- Security Firms
- Vessel Managers
- Insurance
- Packaging
- Restaurant
- Technology
- Trucking
- Shipyards
- Accountants
- Marine Contracting
- Investment Managers
- Management Services

# Mississippi River – Overview





• **More than 5,000 oceangoing vessels annually move through New Orleans on the Lower Mississippi River**

• **Origin/Destination of vessel calls:**

- **American Midwest**
- **Latin America**
- **Europe**
- **Asia**
- **Africa**



# Mississippi River Deep Draft Vessel Types

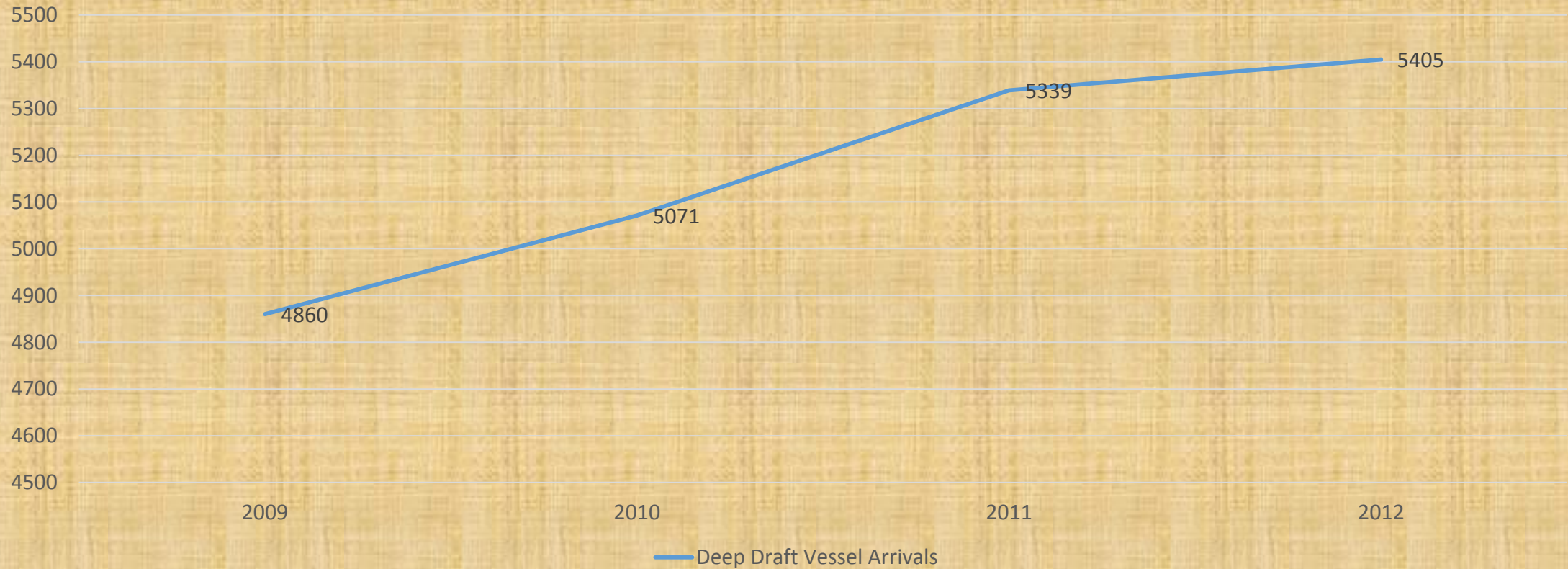
- Break Bulk
- Bulk Carrier
- Chemical Tankers
- Combined Chemical/Crude Tankers
- Containers
- LPG
- Naval
- Passenger
- Product Tankers
- Refrigerated Cargo
- Ro/Ro
- Ocean Going Tugs
- Crude Oil Tankers





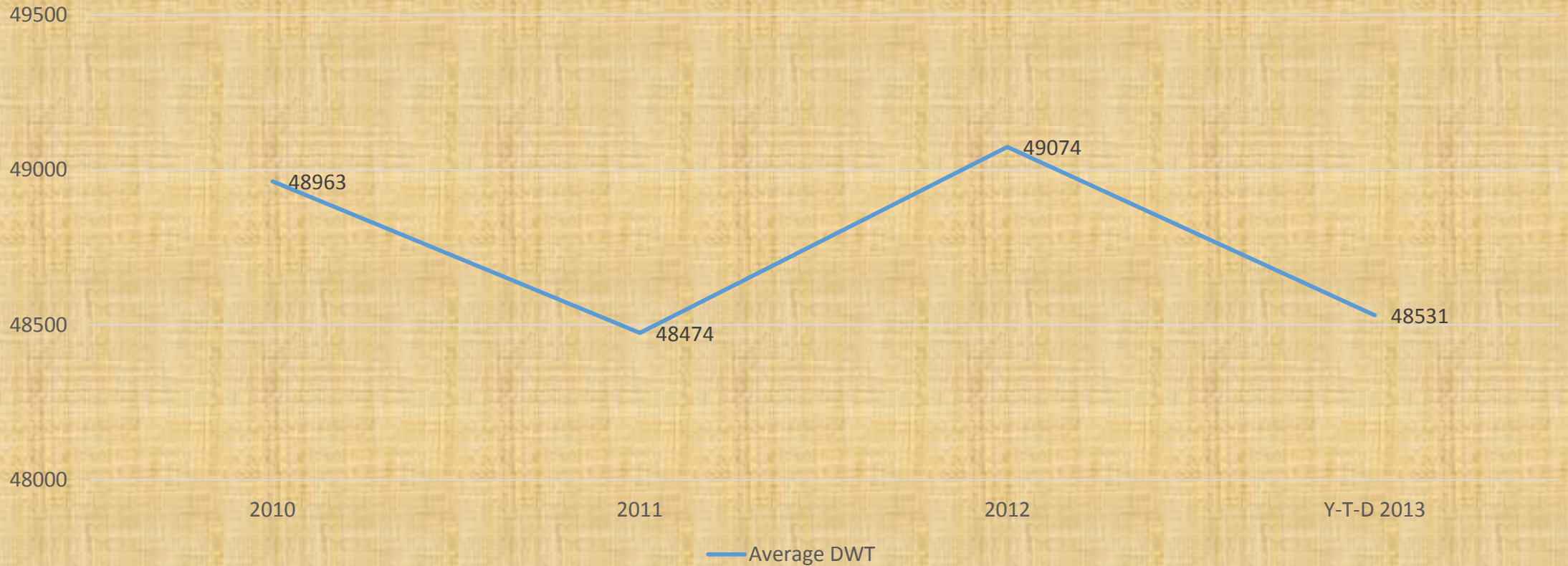
# Mississippi River – Deep Draft Vessel Arrivals

2009 – 2012



# Mississippi River – Deep Draft Vessel Arrivals (Average Vessel Size)

2010 – Y-T-D 2013



# Mississippi River – Deep Draft Ports

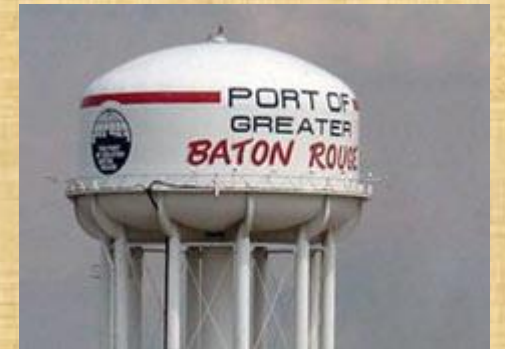


*Plaquemines Port*  
Harbor & Terminal District

[info@portofplaquemines.com](mailto:info@portofplaquemines.com)



**Port Of  
South Louisiana**  
TRANSPORTATION CENTER OF THE AMERICAS

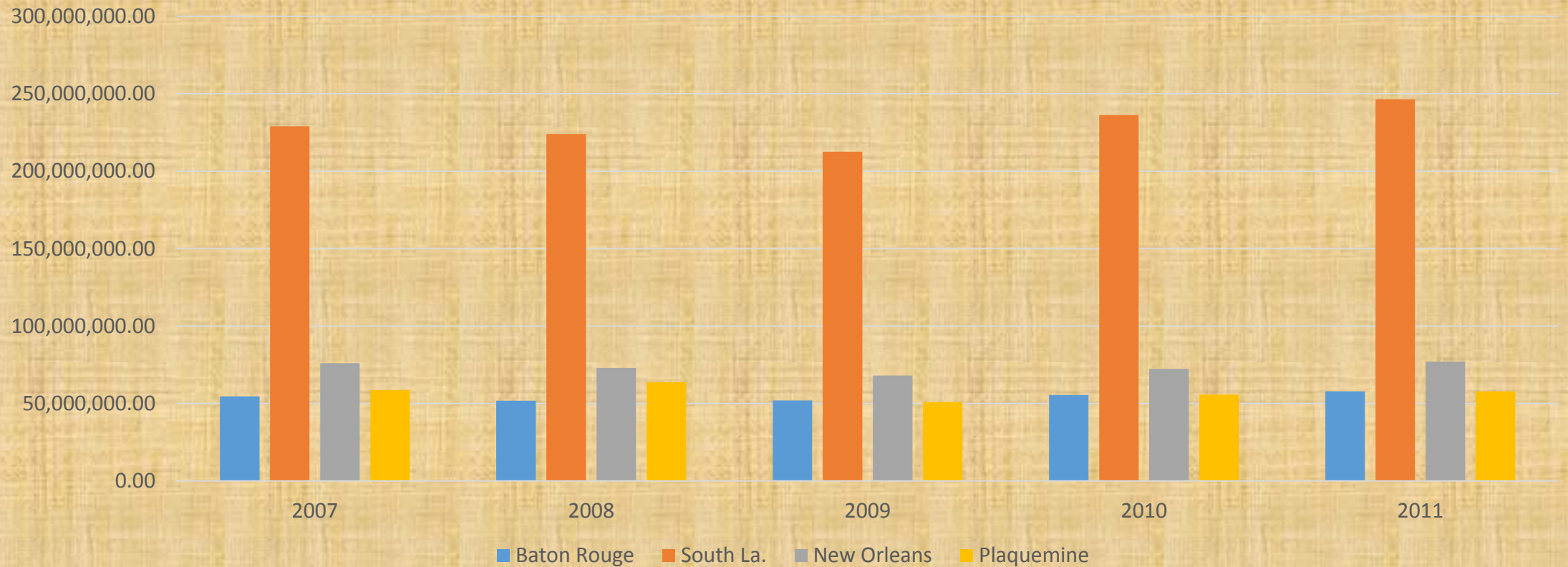


# Total Cargo Movement (United States)



# Total Cargo Movements

## Mississippi River Deep Draft Ports



# Mississippi River – Grain Exports

The Lower Mississippi River is home to 10 Grain Elevators. 60% of the grain exported from the United States is loaded at these facilities.



# Mississippi River – Coal and Petroleum

The Lower Mississippi River is home to numerous Coal Facilities and Oil Refineries. 20% of the nation's coal and petroleum products is moved through the Mississippi River Deep Draft Ports



# 2011 Port Rankings (By Tonnage)

Port of South Louisiana – First

Port of New Orleans – Fifth

Port of Baton Rouge – Tenth

Plaquemines Port - Fourteenth

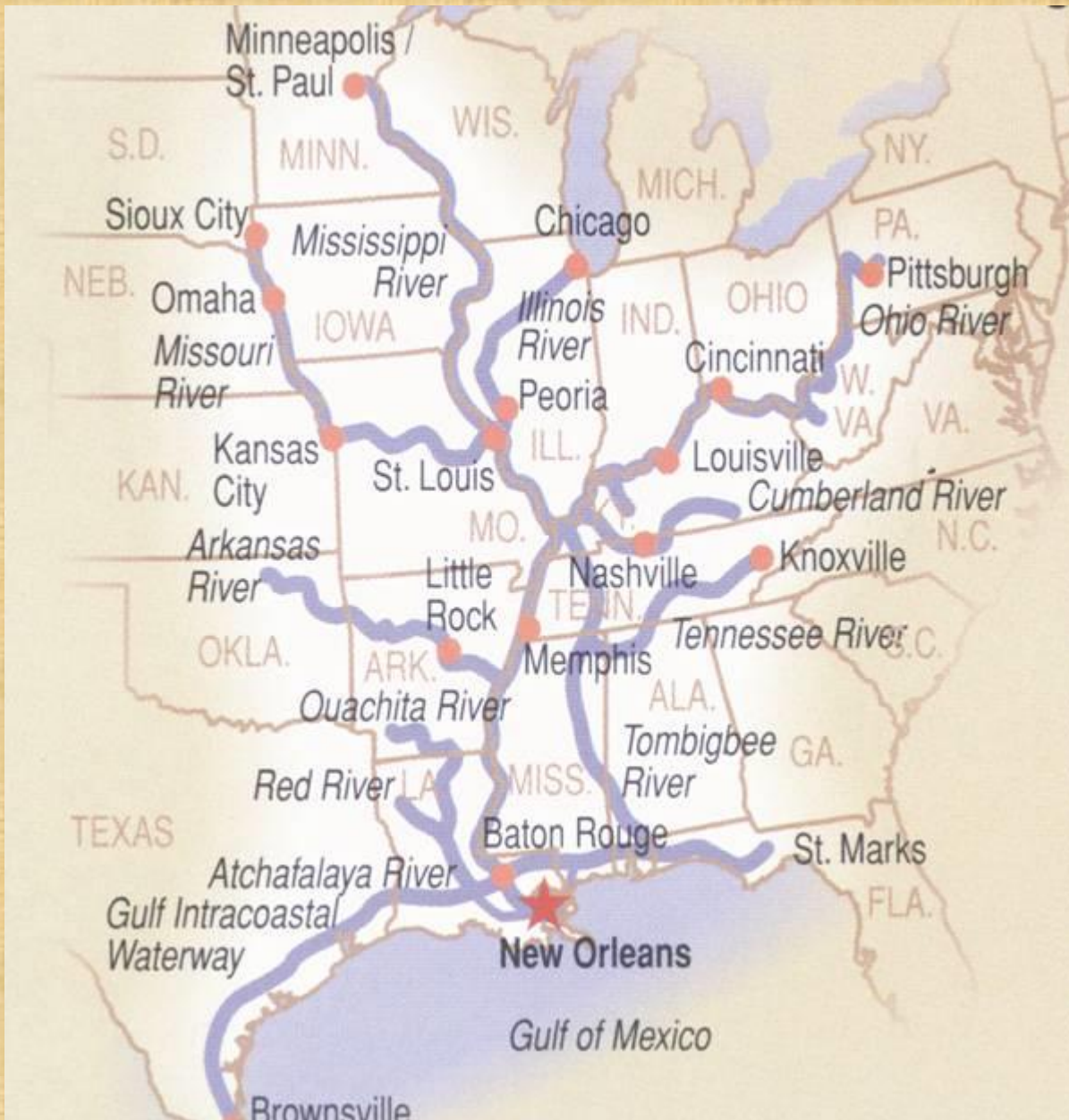




# Port of New Orleans Federal Economic Impact

- 380,000 Total Jobs
- \$16 Billion in Earnings
- \$37 Billion in Economic Output
- \$2.8 Billion in Federal Tax Revenue





## Inland Waterway System

**A 14,500-mile inland waterway system awaits cargo arriving at the Mississippi River. This system of rivers and navigation channels can reach Pittsburgh, Chicago, Kansas City and all points in between.**



**The Port of New Orleans is the only U.S. Seaport served by six Class One rail roads:**

- Burlington Northern/Santa Fe**
- Canadian National**
- CSX**
- Kansas City Southern**
- Norfolk Southern**
- Union Pacific**
- NOPB**



# CHALLENGES

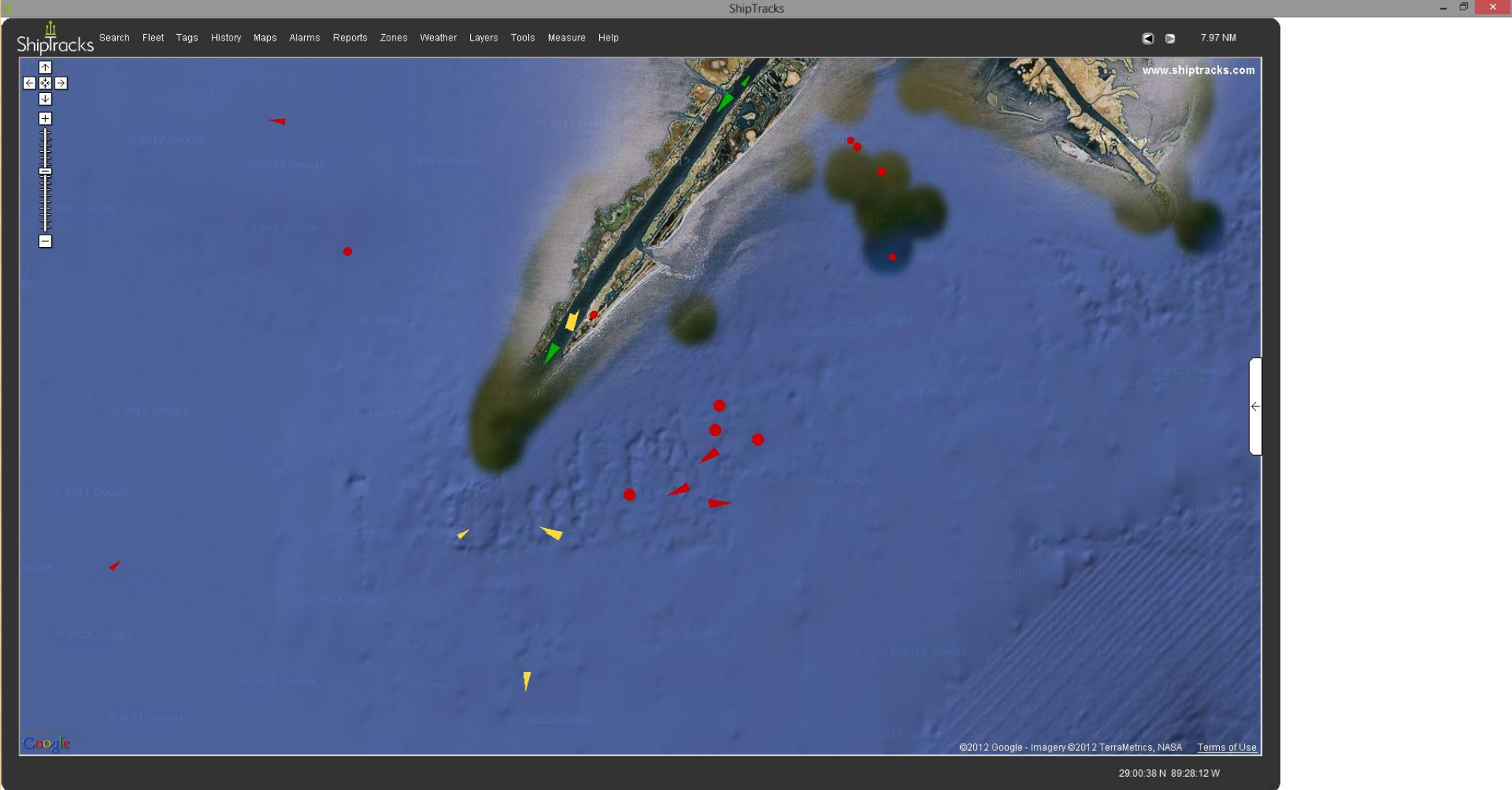
I EXPECTED TIMES LIKE THIS - BUT I NEVER THOUGHT  
THEY'D BE SO BAD, SO LONG, AND SO FREQUENT.

[www.despair.com](http://www.despair.com)

# Hurricane Isaac – August 2012

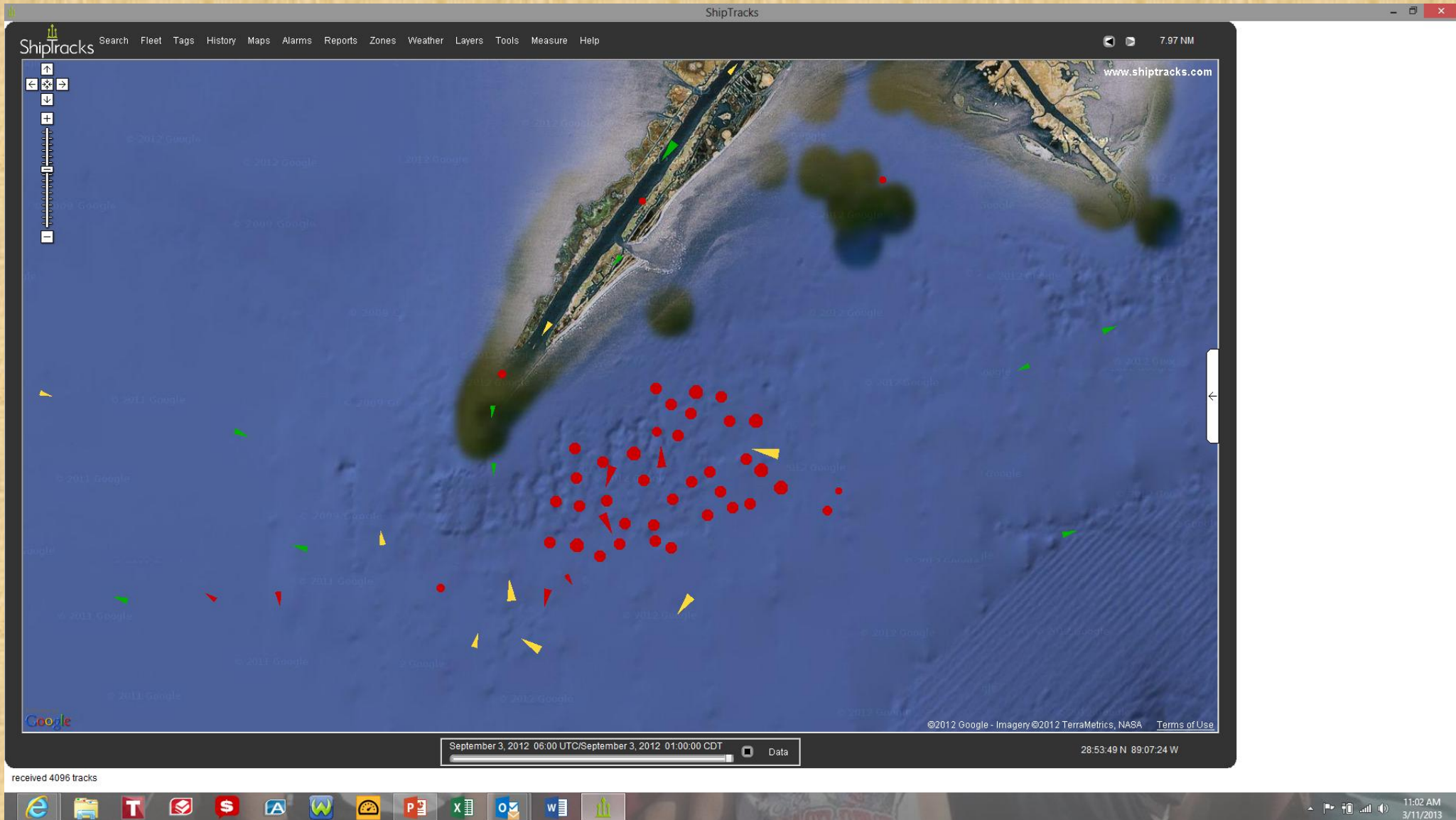


# Southwest Pass Anchorage – 3/11/2013



received 4096 tracks

# Southwest Pass Anchorage – 9/3/12 (After Hurricane Isaac)



# Dredging





# Questions ?



Brett M. Bourgeois  
Executive Director  
New Orleans Board of Trade