

# Taking Action on Truck Parking

Kentucky's Truck Parking Assessment and Action Plan

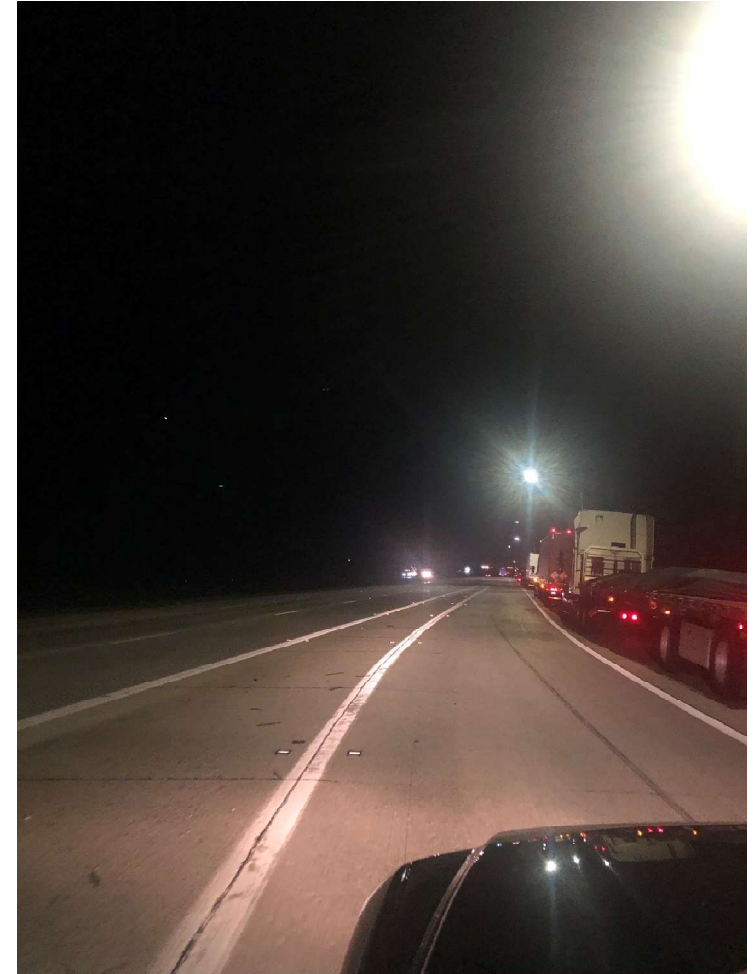
Jeremy Edgeworth, Kentucky Transportation Cabinet

KENTUCKY TRUCK  
PARKING STUDY



# Purpose, Need, Vision

- What's the problem?



# Purpose, Need, Vision

- Just build more parking?



# Purpose, Need, Vision

- 2019 Truck Parking Quick Look Study



Final Technical Report

Truck Parking Assessment

Prepared for:

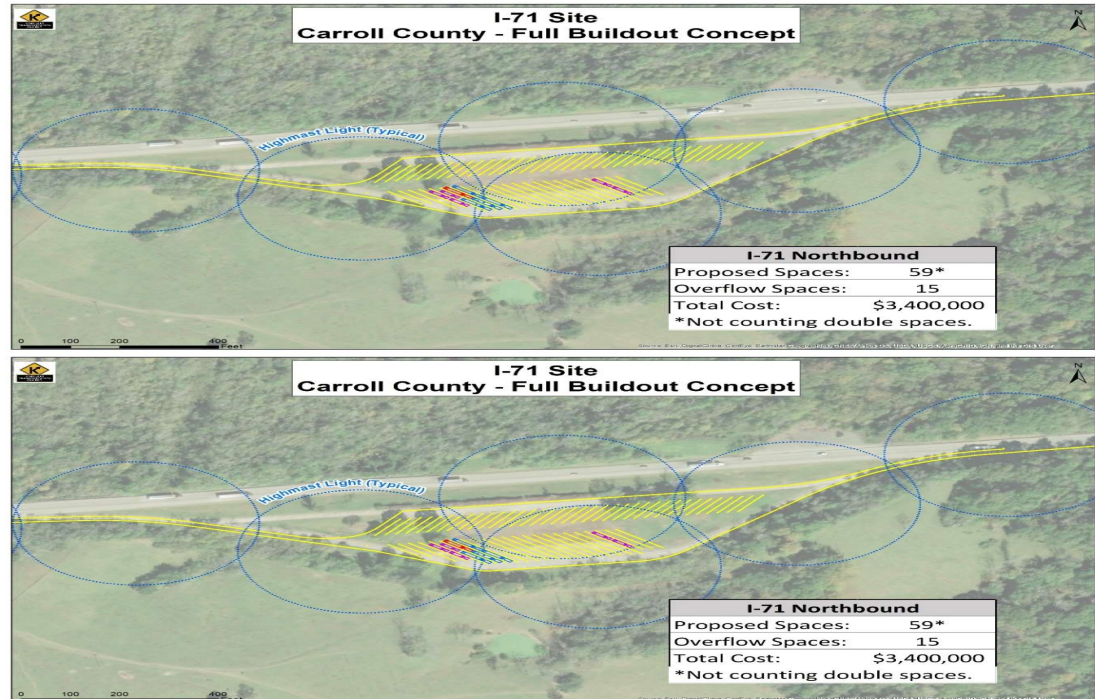


Kentucky Transportation Cabinet  
Central Office, Division of Planning

Prepared by:



March 2020



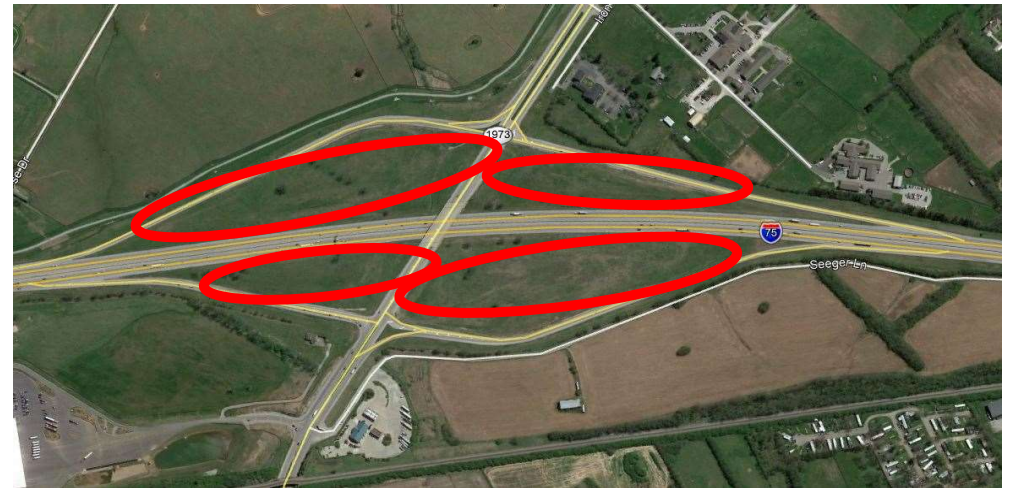
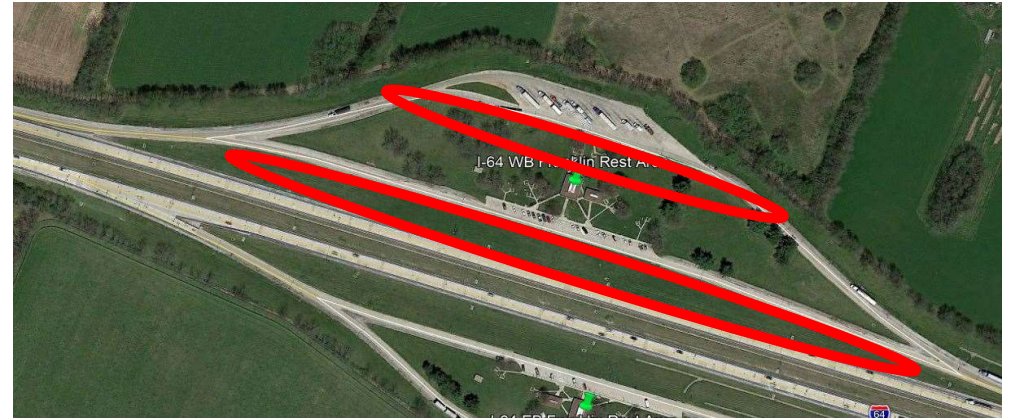
# Purpose, Need, Vision

- Where are they parking?



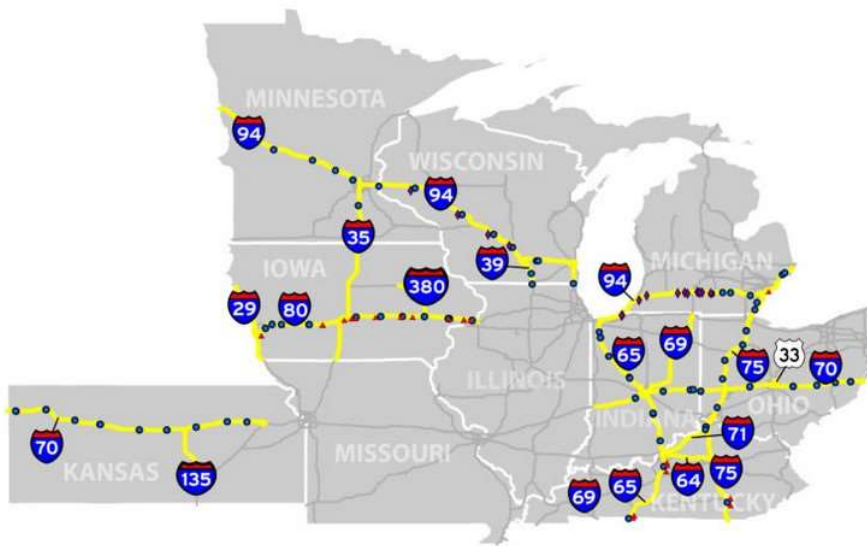
# Purpose, Need, Vision

- What are our options?



# Purpose, Need, Vision

- Truck Parking IMS/Apps



# Purpose, Need, Vision

- Take Action!





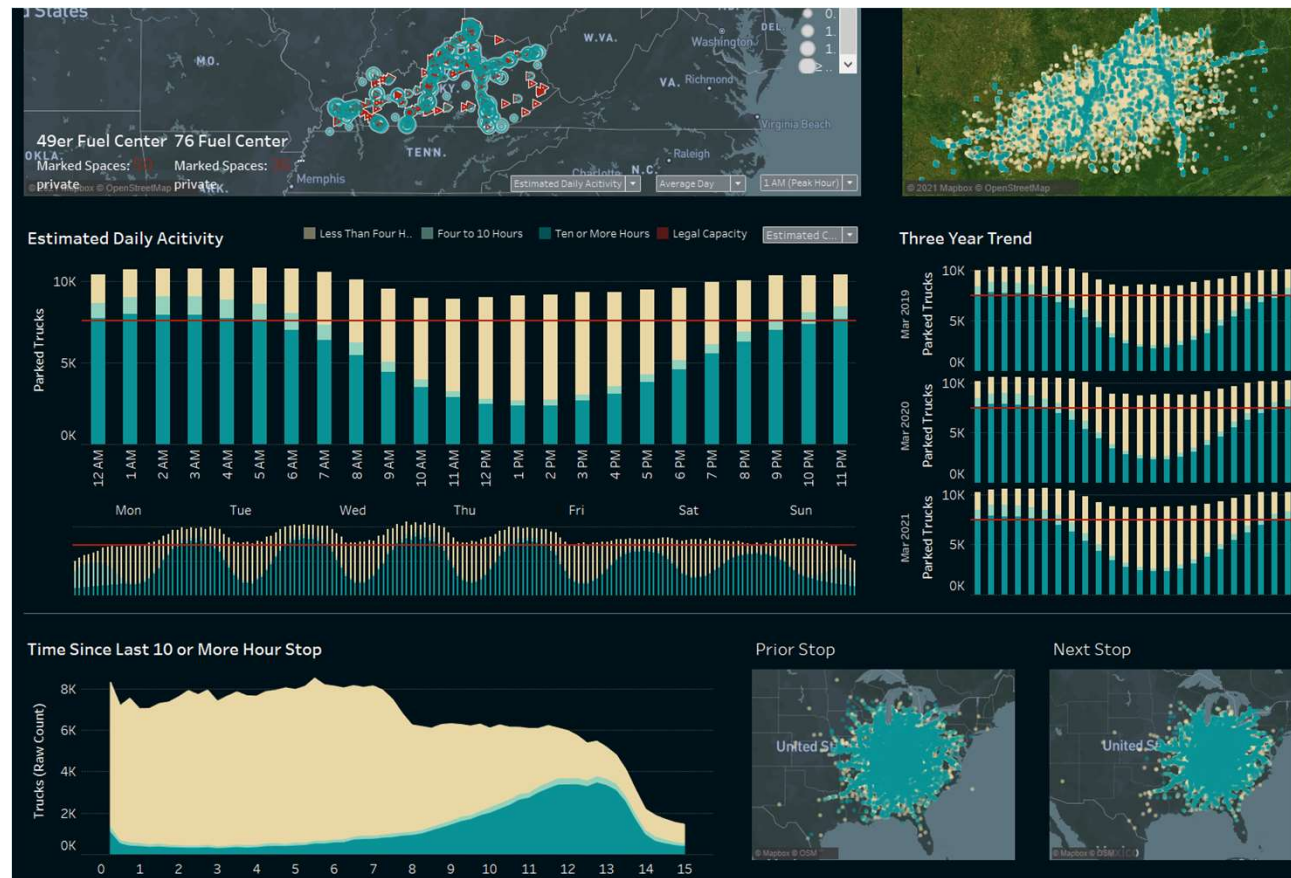
# Inventory Analysis

- What is our supply?
  - 7,200 Spaces

Category	Demand	Capacity	Ratio
Rest Area	1,186	890	1.33
Weigh Station	131	144	0.91
Truck Stop	5,931	5,861	1.01
Other	411	281	1.46
Walmart/Box Store	295	-	n/a
Ramp	164	-	n/a
<b>TOTAL</b>	<b>8,118</b>	<b>7,176</b>	

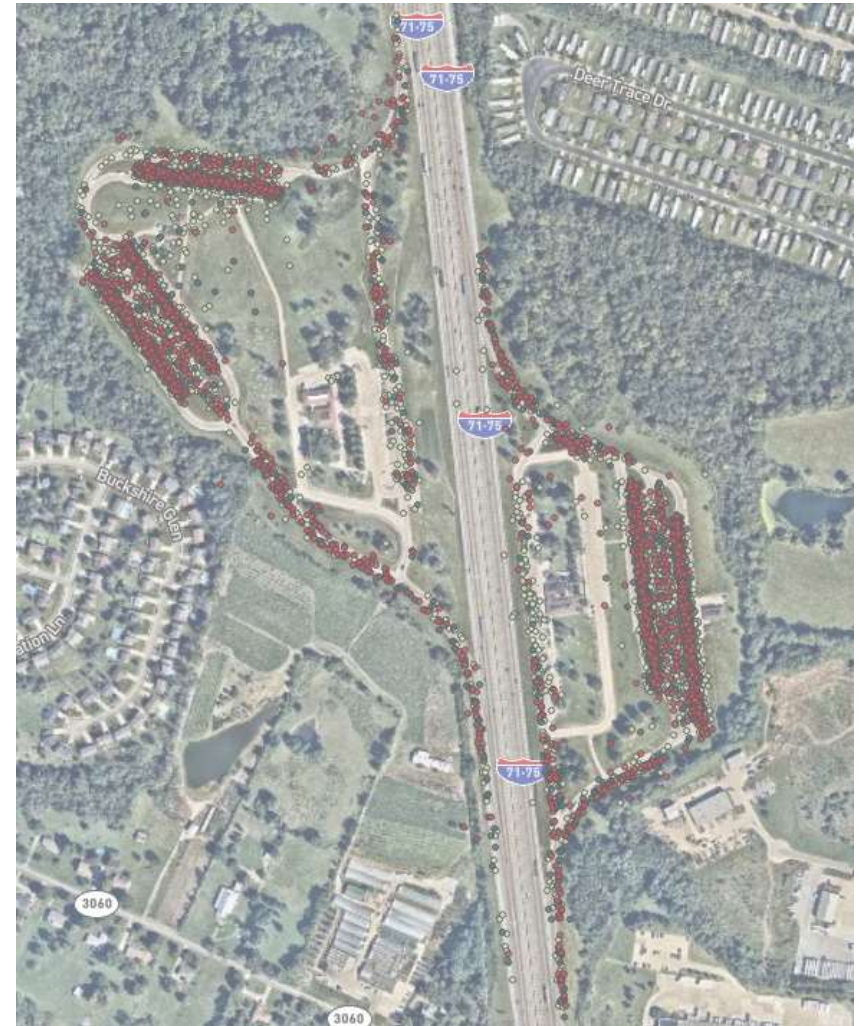
# Demand Analysis

- 9,000 drivers per night



# Demand Analysis

- I-71/I-75 Boone County Rest Areas
- Northbound
  - Capacity: 53 spaces
  - Peak Demand: 106
- Southbound
  - Capacity 67
  - Peak Demand: 150
- Dots
  - Red = 10+ hours
  - Blue = 1-10 hours
  - Green = <1 hour



# Demand Analysis

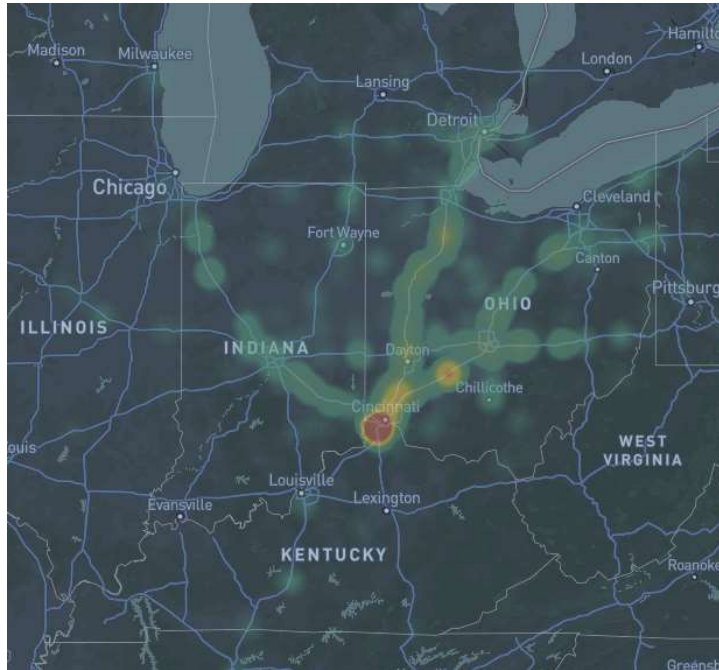
- At capacity between 6 P.M. and 8 A.M.
- Three-year trend shows increasing demand between 2019 and 2021



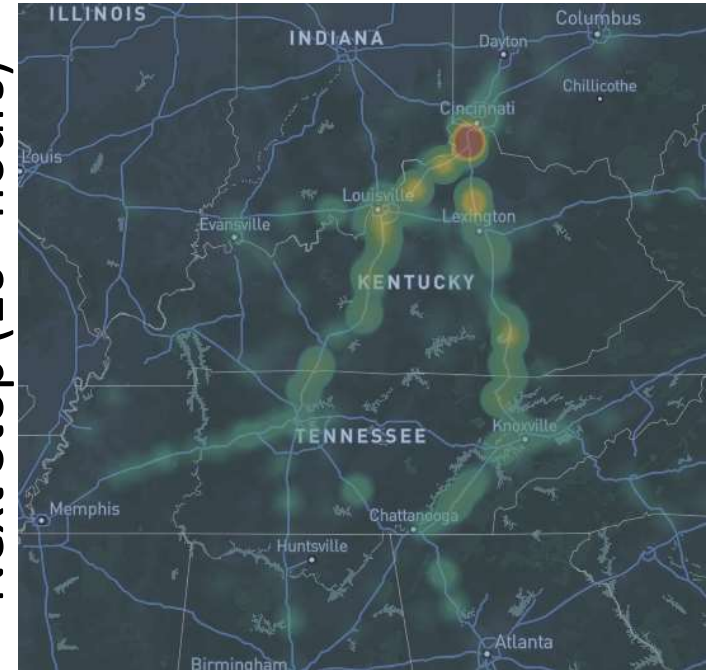
# Demand Analysis

- Travel Sheds-Southbound

Last Stop (10+ hours)



Next Stop (10+ hours)

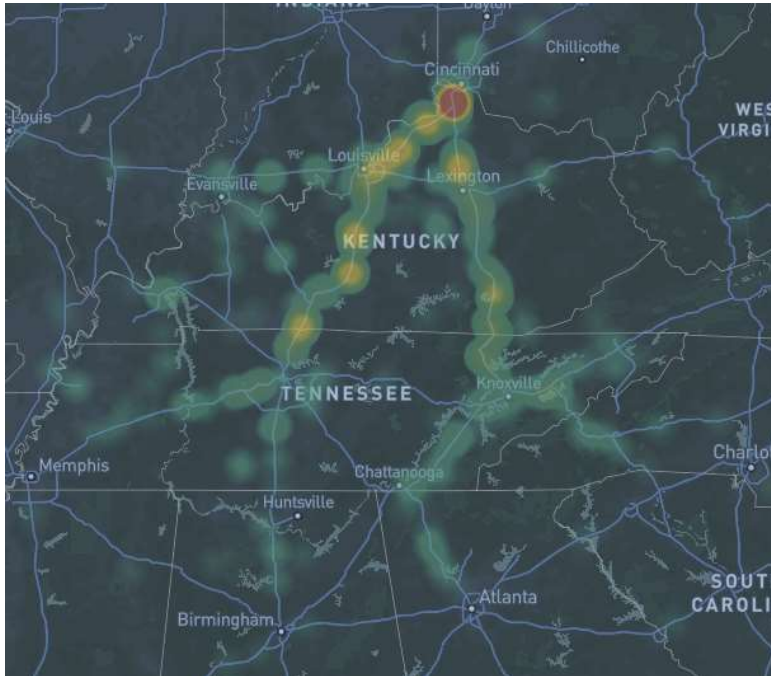


THE KENTUCKY TRANSPORTATION CABINET

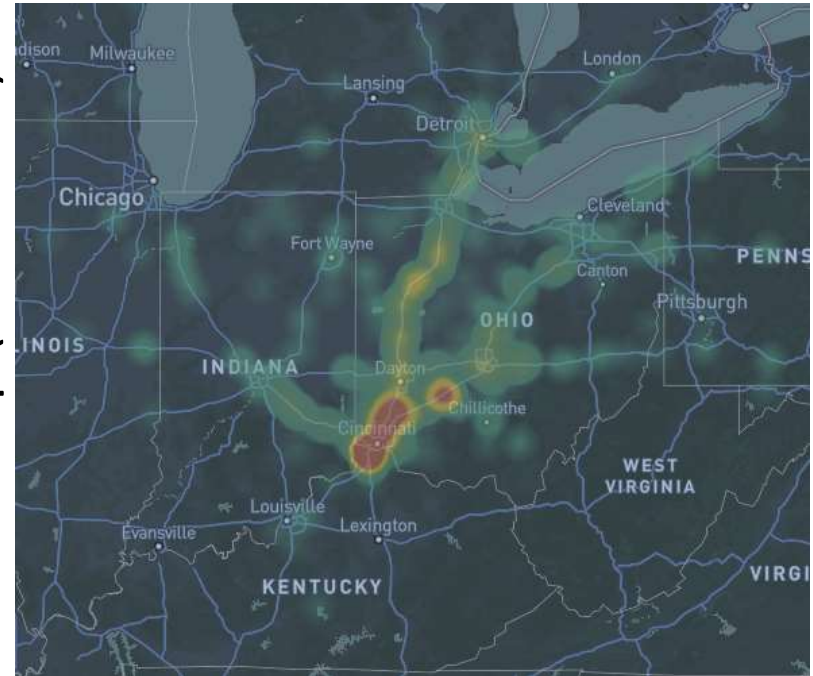
# Demand Analysis

- Travel Sheds: Northbound

Last Stop (10+ hours)



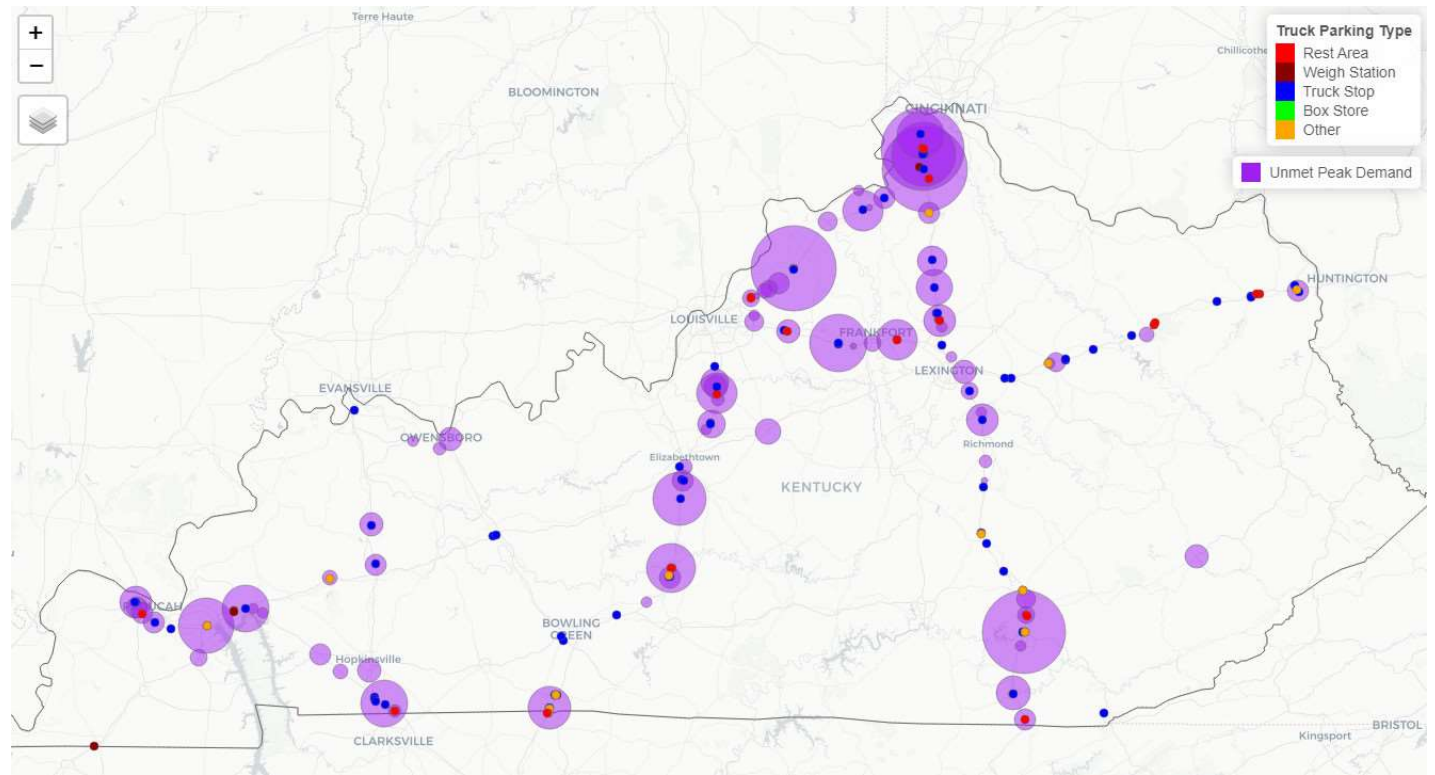
Next Stop (10+ hours)



THE KENTUCKY TRANSPORTATION CABINET

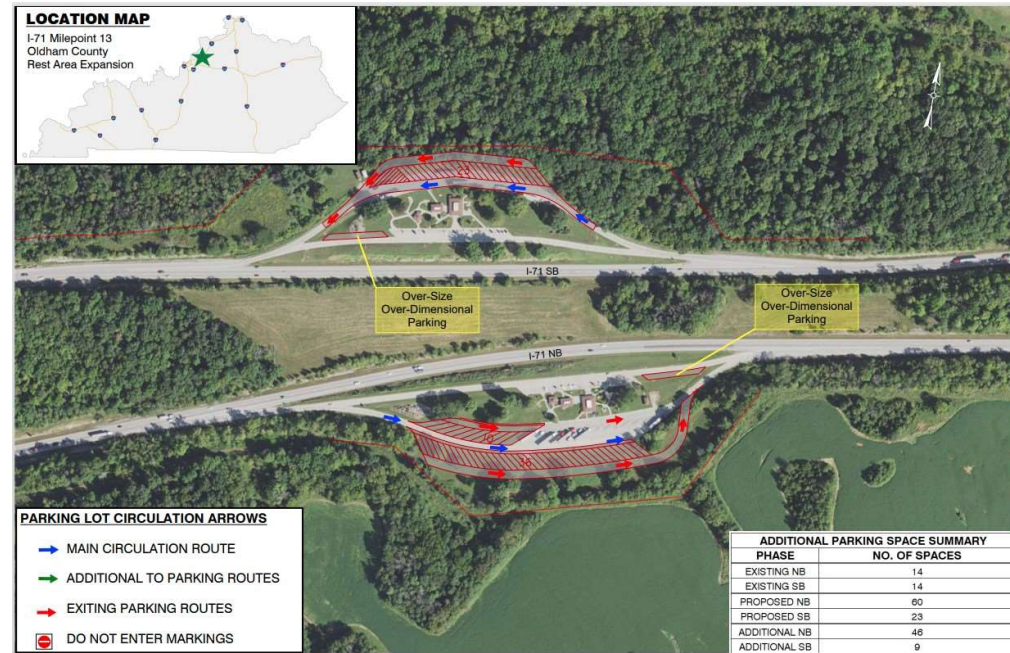
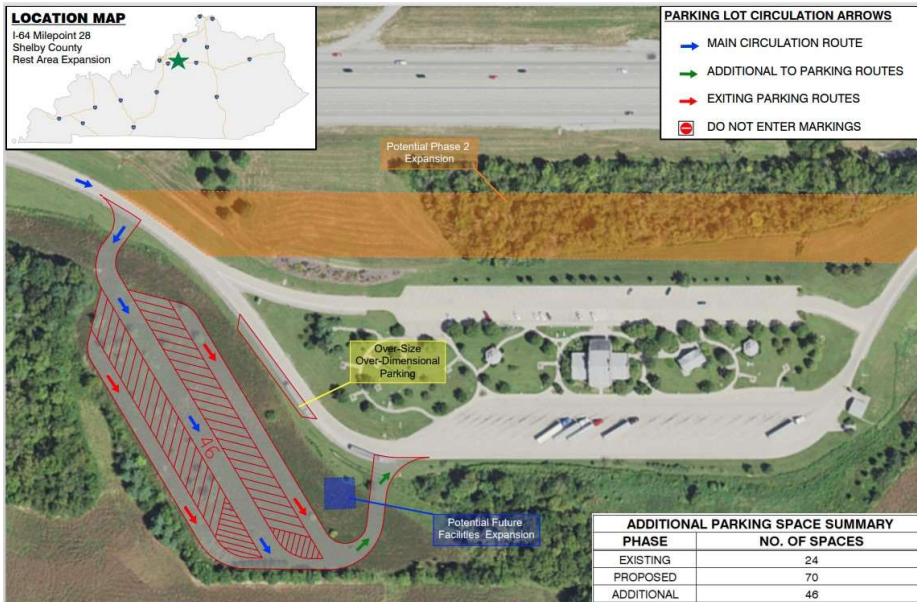
# Demand Analysis

- Problem Areas



# Right of Way Solutions

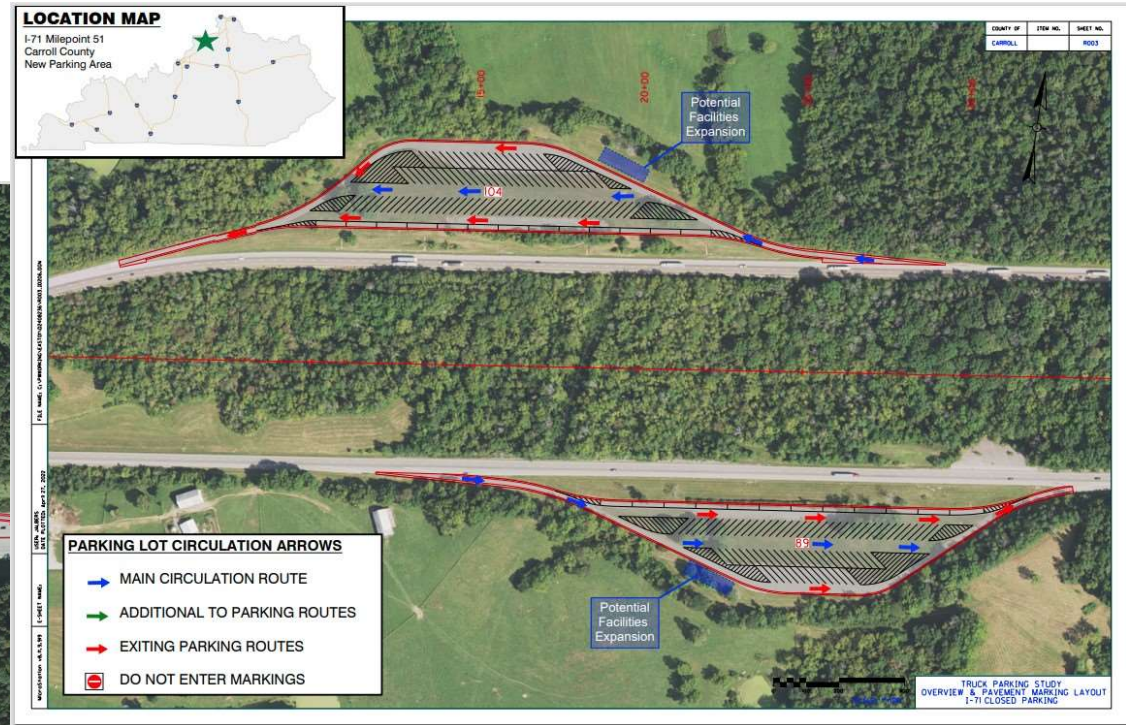
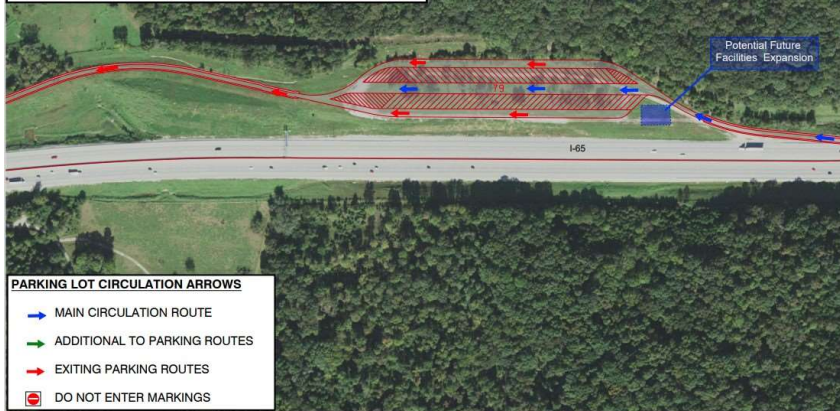
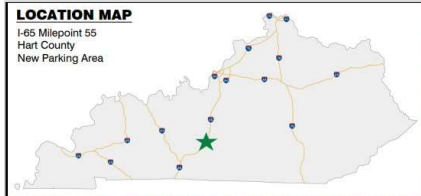
- Design Types
  - Existing Facility Expansion





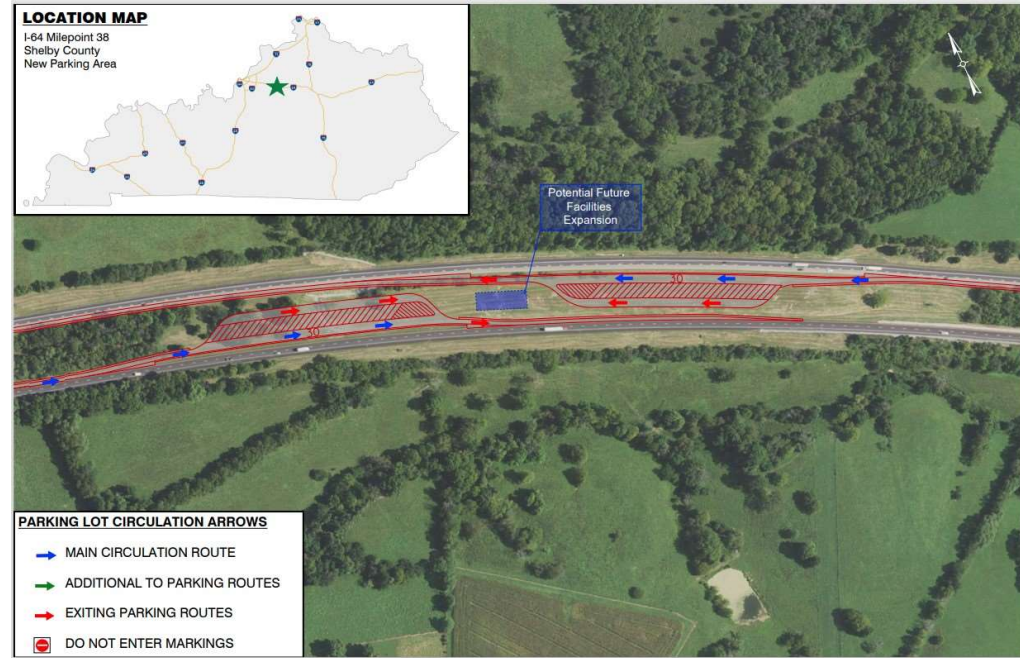
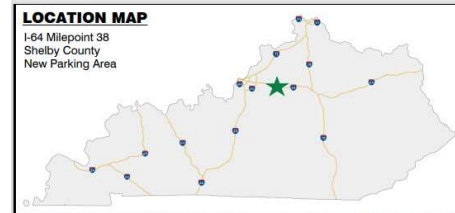
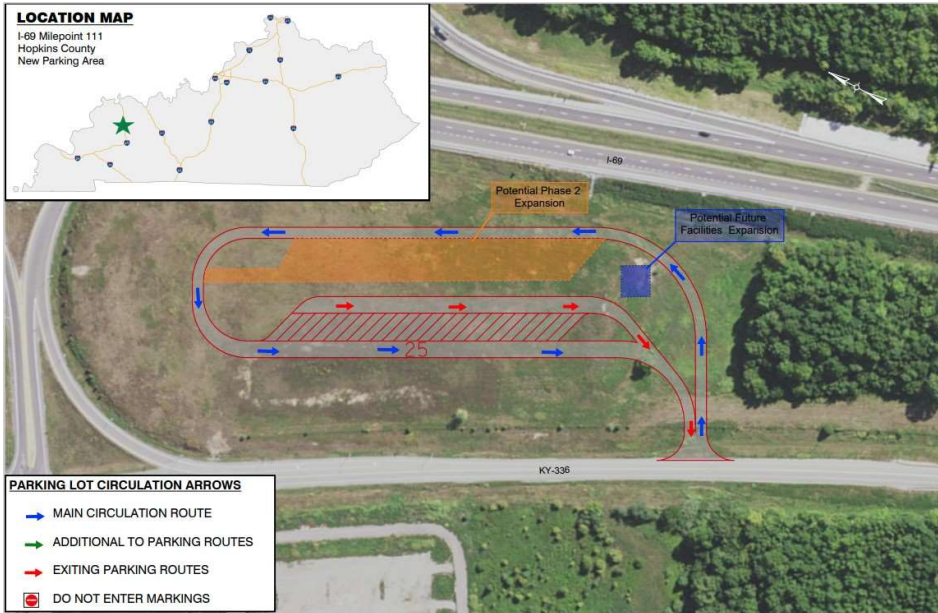
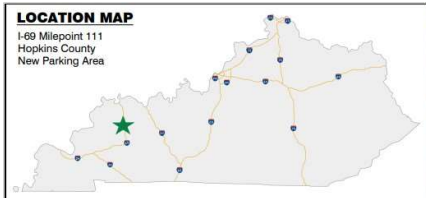
# Right of Way Solutions

- Design Types
  - Vacant Facility Expansion



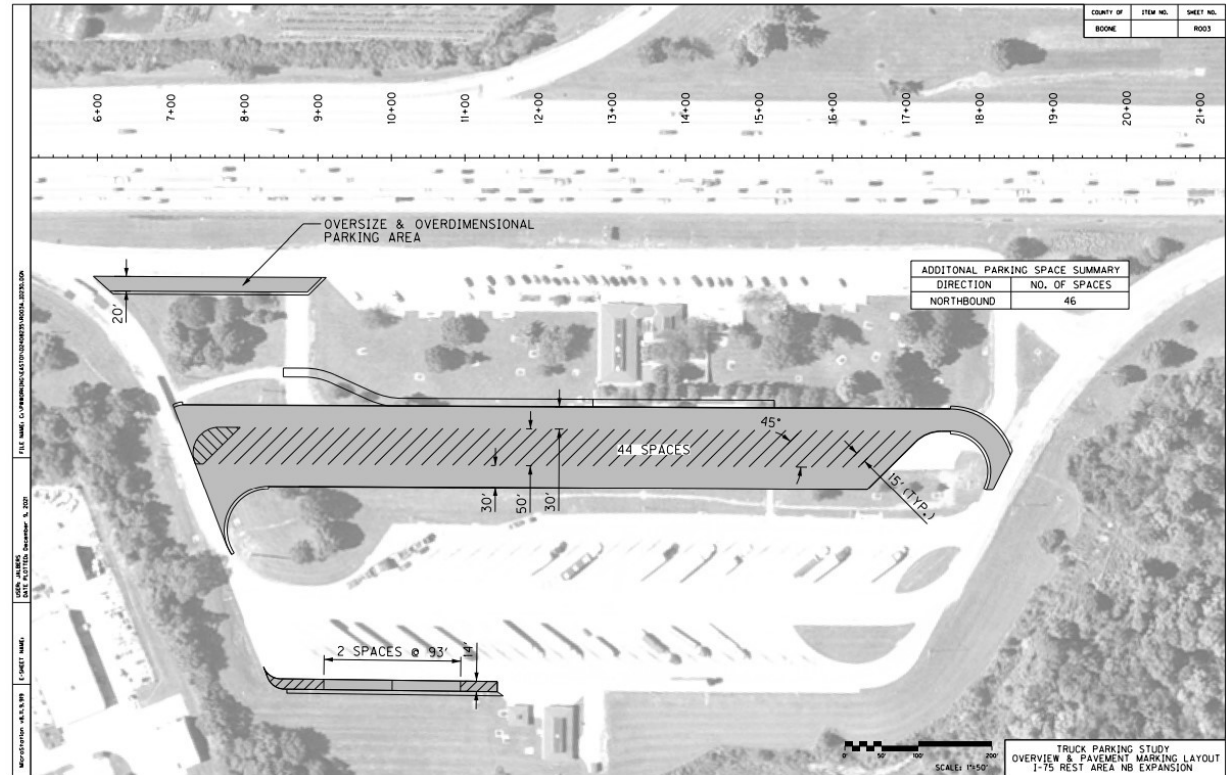
# Right of Way Solutions

- Design Types
  - Excess ROW



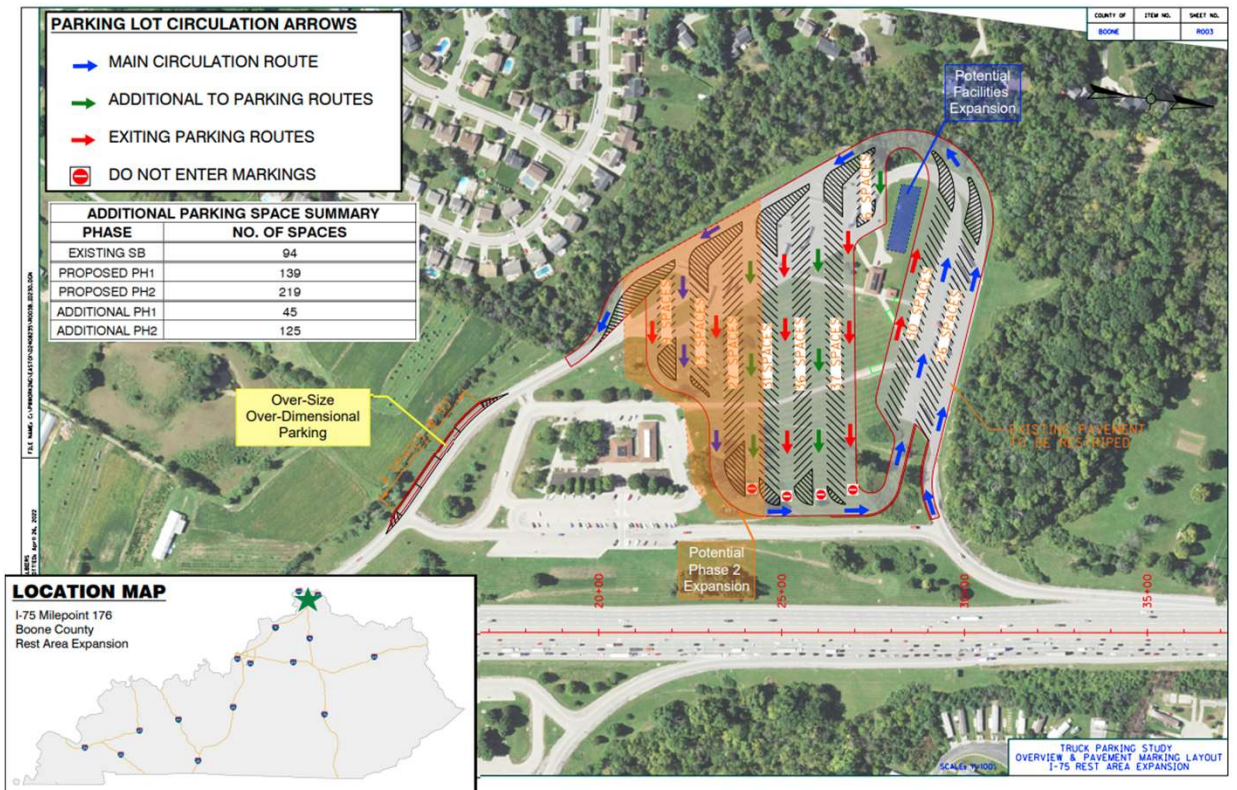
# Right of Way Solutions

- Conceptual Designs
- Tier I



# Right of Way Solutions

- Conceptual Designs
- Tier I
- Tier II



# Outreach Efforts

- Drivers Survey #1-Needs



[kytruckparking.com](http://kytruckparking.com)

THE KENTUCKY TRANSPORTATION CABINET

# Outreach Efforts

- Drivers Survey #1-Needs



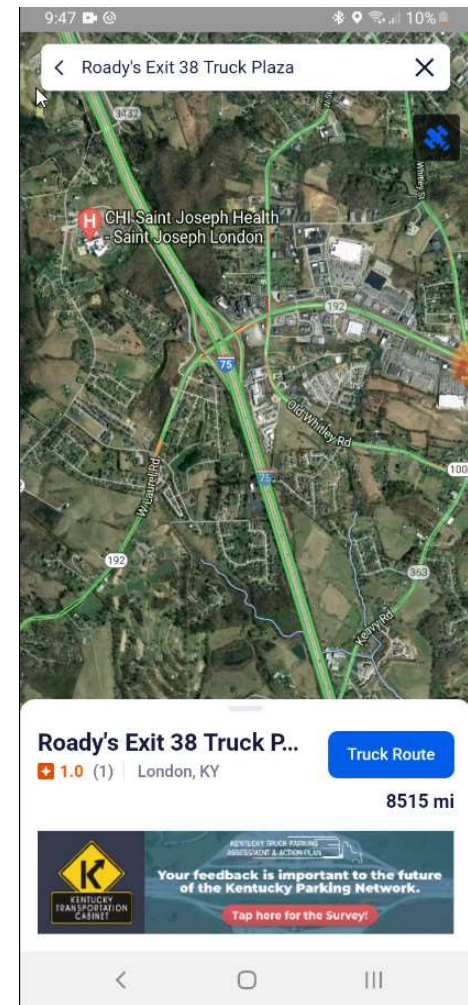
# Outreach Efforts

- Drivers Survey #1-Needs



# Outreach Efforts

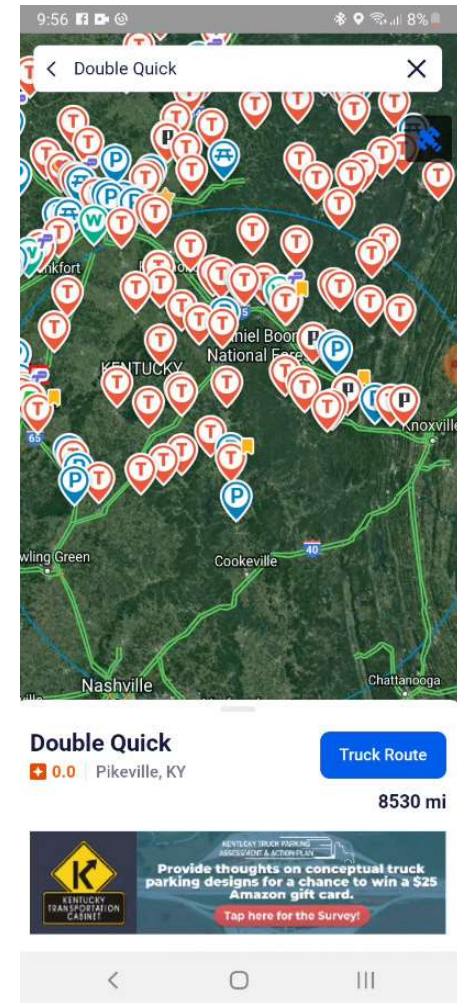
- Drivers Survey #1-Needs





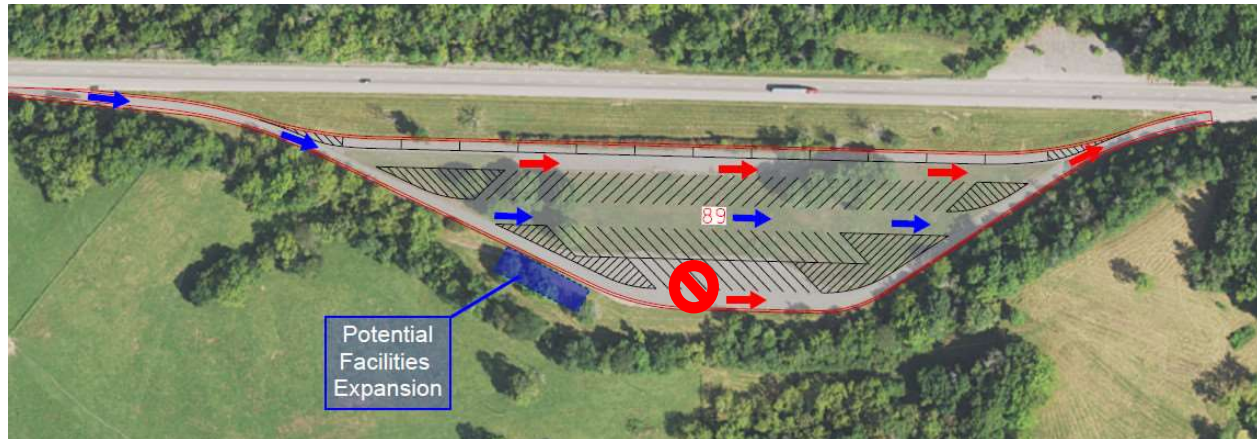
# Outreach Efforts

- Drivers Survey #1-Needs
- FHWA Consultation
- KYTC Highway District Consultation
- Drivers Survey #2-Designs



# Outreach Efforts

- Drivers Survey #1-Needs
- FHWA Consultation
- KYTC Highway District Consultation
- Drivers Survey #2-Designs

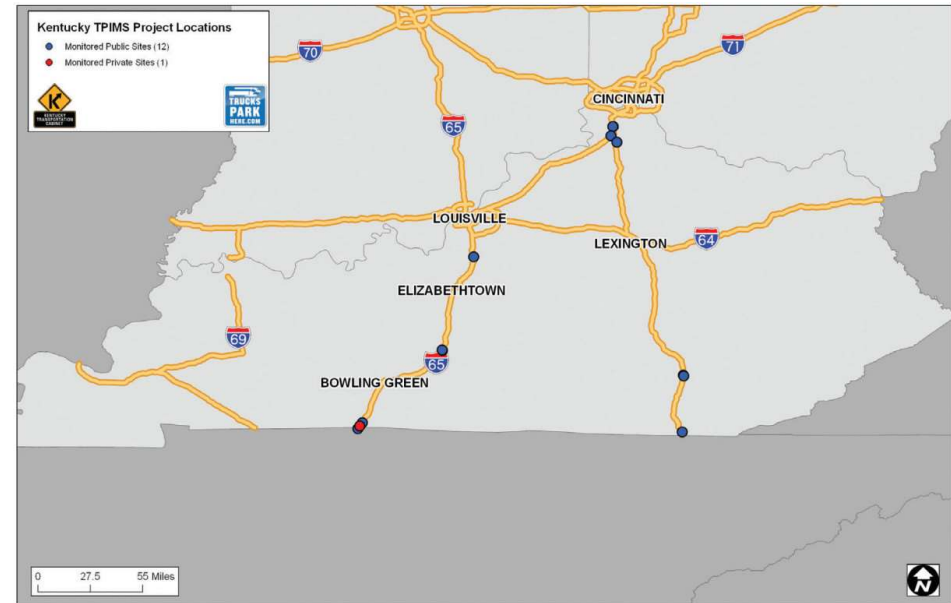


# Technology Options

- TPIMS Expansion
- App Integration
- New technologies?

**P**  
**SPACES OPEN**

I-75 SB Rest Area @ MP 177	LOW
I-75 SB Weigh Station @ MP 168	38
I-75 SB Weigh Station @ MP 34	LOW



## Final Action Plan

- Prioritized list of improvements
- 27 conceptual designs
- 10 sites with 15% drawings/estimates
- Schedule to develop/timing
- Technology recommendations
- Funding options
- Partnership opportunities



**[kytruckparking.com](https://www.kytruckparking.com)**

THE KENTUCKY TRANSPORTATION CABINET

## Recent Developments

- FY 23-I-71/I-75 Boone County Rest Area Truck Parking Study-\$1.1 million
- FY 24-\$4 million to expand truck parking at one of four sites.
- FY 24-I-24 Lyon County Weight Stations-\$1.9 million to construct restroom facilities.
- FY 23-27-I-65 Hardin County SB Weigh Station Relocation-\$16 million
  - 100+ truck parking spaces



**QUESTIONS?**

# CONTACT INFORMATION

---

Jeremy Edgeworth, KYTC  
[Jeremy.edgeworth@ky.gov](mailto:Jeremy.edgeworth@ky.gov)  
502-782-5095

Twitter: @KYTC  
Facebook: /kytc120